

**290025**

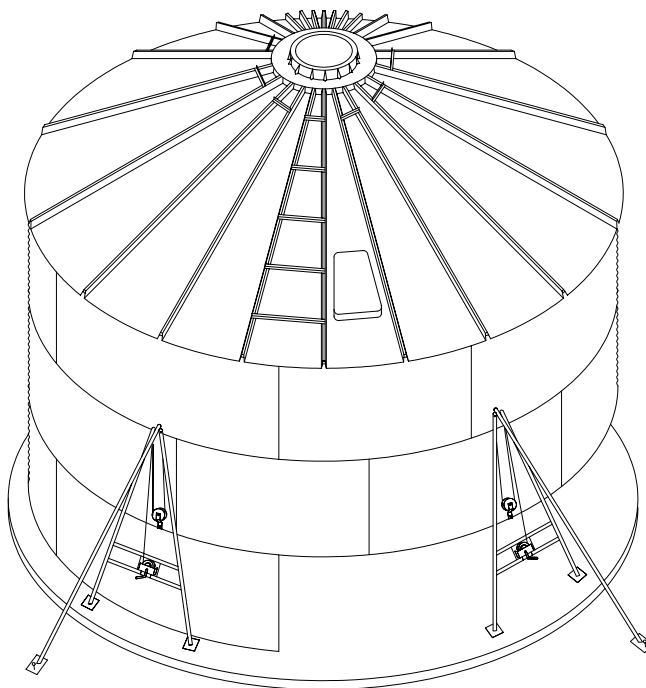
R020221

# **SCAFCO<sup>®</sup>**

## **GRAIN BIN**

### **12' - 42' DIAMETER**

## **ASSEMBLY INSTRUCTIONS**



### **CAUTION**

Galvanized materials are subject to unsightly “white rust” if moisture penetrates the wall sheet bundle. To avoid this condition, separate wall sheets so that air can dry wall sheets. Turning the wall sheet bundles over to a convex position is another way to prevent moisture collecting between sheets.

If white rust does occur, remove using Oakite™ solution (or vinegar solution). Clean and dry surface and apply zinc-rich paint.





## **WARNING TO CUSTOMERS AND CONTRACTORS**

### **W A R N I N G ! ! !**

Grain storage silos and liquid storage tanks are structures that are constantly under static and dynamic forces in varying degrees. Scafco Grain Bins/Silos, Hopper Bottom Tanks and Liquid Storage Tanks are designed and manufactured to withstand these forces when properly installed.

Proper assembly and installation of these storage structures will provide long years of service to our customers. To help ensure this, the Contractors and Customers who plan to install the structure themselves must follow the guidelines listed below:

- The Contractor/Customer should follow the Installation Manuals and Drawings supplied with the product.
- The Installation Manuals and Drawings should be thoroughly studied prior to the start of installation work.
- The Contractor/Customer should contact Scafco Customer Service to verify or clarify any question they have on the instructions or drawings before starting installation work.
- If any question, doubt or difficulty arises during the process of installation, the Contractor/Customer should contact Scafco Customer Service to get an answer or instruction to resolve the problem.
- **Non-compliance with the instructions shown in the manuals and/or drawings, or unauthorized modification/s, may result in structural damage/failure, injury or DEATH !**
- **Non-compliance with the instructions shown in the manuals and/or drawings, including unauthorized modification/s, will void the Manufacturer's Warranty.**
- While every effort is made to insure that the drawings and instructions are without errors, they can happen. Therefore, if you have any concerns, doubts or questions regarding the correctness of any instruction or drawing, please contact us immediately for clarification prior to proceeding.





## TABLE OF CONTENTS

WARNING TO CUSTOMERS AND CONTRACTORS .....	1
TABLE OF CONTENTS.....	3
5 YEAR SCAFCO BIN/SILO WARRANTY .....	5
WALL SHEET LAYOUT & DOOR OPTIONS.....	6
WALL SHEET END VIEW & COLOR CODES .....	6
GRAIN BIN FLAT FOUNDATION PLAN .....	7
FOUNDATION DETAILS FOR BIN WELL & TUBES .....	8
FOUNDATION SLAB OPTIONS .....	9
BIN WELL INSTALLATION .....	10
GRAIN BIN CONE FOUNDATION PLAN .....	11
ERECTION PROCEDURES.....	12
ROOF INSTALLATION DETAILS .....	13
RIB CLIP & EAVE SEAL INSTALLATION .....	14
RIB & CENTER CLIP CONNECTIONS .....	15
12' DIAMETER BINS.....	15
15' DIAMETER BINS.....	15
18' DIAMETER BINS.....	15
21' DIAMETER BINS.....	15
24' DIAMETER BINS.....	16
27' DIAMETER BINS.....	16
30' DIAMETER BINS.....	16
33' DIAMETER BINS.....	16
36' DIAMETER BINS.....	17
39' DIAMETER BINS.....	17
42' DIAMETER BINS.....	17
WEATHERSKIRT & CAP INSTALLATION .....	18
ROOF CAP HINGE INSTALLATION .....	19
ROOF CAP ASSEMBLY .....	20
COMPLETE ROOF CAP ASSEMBLY.....	22
OPTIONAL SAFETY RING INSTALLATION.....	23
ROOF SUPPORT RING INSTALLATION .....	24
ROOF SUPPORT RING DETAILS.....	25
ROOF REINFORCING RIB INSTALLATION .....	26
ROOF VENT INSTALLATION .....	27
EXTERIOR LADDER INSTALLATION .....	28



ANCHORING & SEALING DETAILS.....	29
BASE SEALANT APPLICATION.....	30
WALK-IN DOOR INSTALLATION .....	31
FIELD INSTALLATION OF AUGER HOOD.....	32
WALL SHEET GAUGES .....	33
12" DIAMETER BIN .....	33
15" DIAMETER BIN .....	33
18" DIAMETER BIN .....	34
21" DIAMETER BIN .....	34
24" DIAMETER BIN .....	35
27" DIAMETER BIN .....	35
30" DIAMETER BIN .....	36
33" DIAMETER BIN .....	36
36" DIAMETER BIN .....	36
39" DIAMETER BIN .....	37
42" DIAMETER BIN .....	37
SILO STEP INSTALLATION.....	38



## **5 YEAR SCAFCO BIN/SILO WARRANTY**

### **WARRANTY**

The manufacturer warrants each new Scafco Grain Bin/Silo manufactured by it to be free from defects in material or workmanship **FOR FIVE YEARS** from the date of initial installation by the original purchaser. If such a defect is found by the manufacturer to exist within the five year period, the manufacturer will, at its option, (a) repair or replace such product free of charge, F.O.B. the factory of manufacture, or (b) refund to the original purchaser the original purchase price, in lieu of such repair or replacement.

#### **CONDITIONS AND LIMITATIONS**

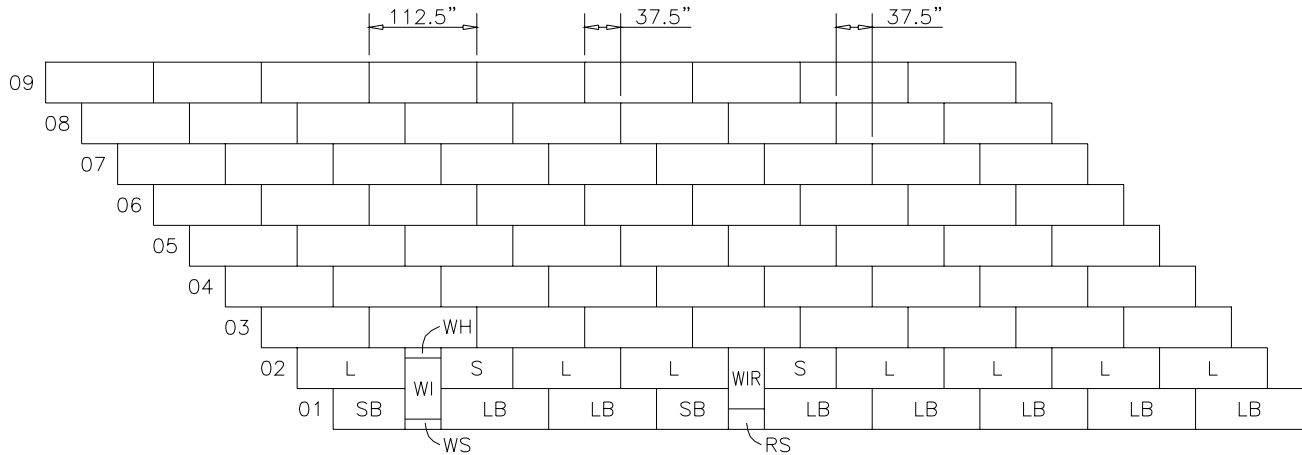
1. The product must be installed and operated in accordance with instructions published by the manufacturer or warranty will be void.
2. Warranty is void if all structural components of the system are not original equipment supplied by the manufacturer.
3. Grain bins/silos and augers are designed for grains and/or free flowing materials and are not warranted for other distribution or substances. Other use will void warranty.
4. This product must be purchased from and installed by an authorized dealer or Certified Representative thereof or the warranty will be void.
5. Malfunctions or failure resulting from misuse, abuse, negligence, alteration, accident, or lack of proper maintenance shall not be considered defects under this warranty.

The manufacturer shall not be liable for any consequential or special damage which any purchaser may suffer or claim to suffer as a result of any defect in the product. "Consequential" or "Special Damages" as used herein include but are not limited to lost or damaged products or goods, costs of transportation, lost sales, lost orders, lost income, increased overhead, labor, and incidental costs and operational inefficiencies.

THIS WARRANTY CONSTITUTES THE MANUFACTURER'S ENTIRE AND SOLE WARRANTY AND THE MANUFACTURER EXPRESSLY DISCLAIMS ANY AND ALL OTHER WARRANTIES, INCLUDING BUT NOT LIMITED TO EXPRESS AND IMPLIED WARRANTIES AS TO MERCHANTABILITY, FITNESS FOR PARTICULAR PURPOSES SOLD, AND DESCRIPTION OR QUALITY OF THE PRODUCT FURNISHED HEREUNDER.

Any exceptions to this warranty must be authorized in writing by an officer of the manufacturing company. The manufacturer reserves the right to change models and specifications at any time without notice or obligation to improve previous models.

## WALL SHEET LAYOUT & DOOR OPTIONS

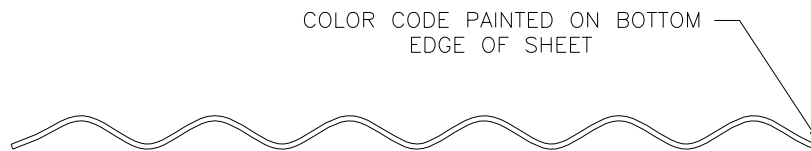


SYB	ABBREVIATION DEFINITIONS	SYB	ABBREVIATION DEFINITIONS
L	LONG WALL SHEET	WH	HEADER FOR WI
S	SHORT WALL SHEET	WS	SILL FOR WI
LB	LONG BOTTOM SHEET	RS	SILL FOR WIR
SB	SHORT BOTTOM SHEET		

WALK-IN (WI)  
OPTIONAL POSITION

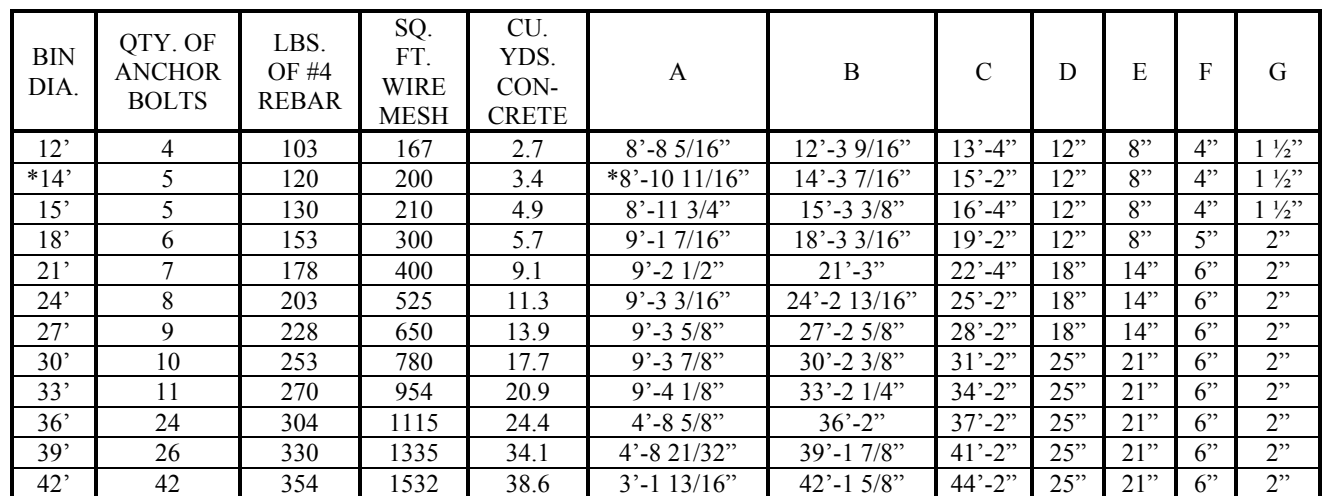
RAISED WALK-IN (WIR)  
STANDARD POSITION

## WALL SHEET END VIEW & COLOR CODES



WALL SHEET GAUGE AND COLOR CODE			
GAUGE	COLOR	GAUGE	COLOR
20	BLACK	14	GREEN
19	WHITE	13	BROWN
18	UNPAINTED	12	ORANGE
17	RED	11	YELLOW
16	BLUE	10	BLACK
15	YELLOW	8	BLUE

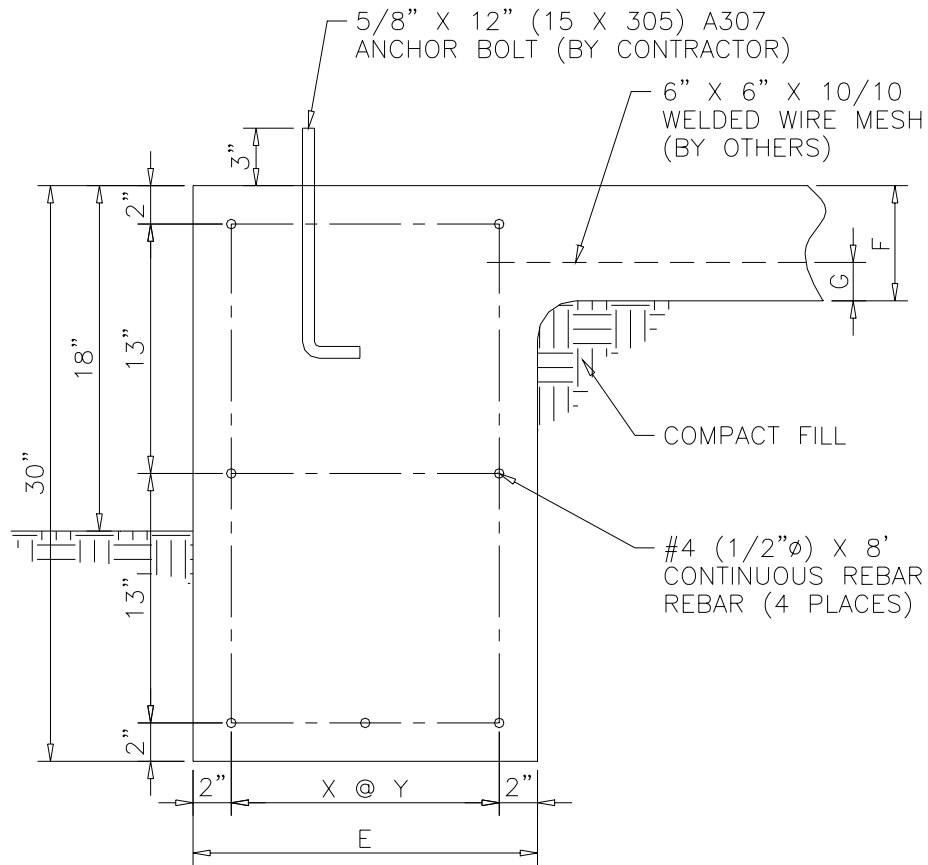




1. Site must be 95% compacted soil back-fill or undisturbed soil. Site must be free from standing water and well drained.
2. Soil around footing ring must be uniform. (Not fine sand)
3. Foundation design is based on uniform soil bearing capacity of 2000 lb. per square foot. Concrete compressive strength at 28 days shall be 2500 psi.
4. Add (1) pound to rebar requirements for each end lap. Lap bars 15”.
5. These are general concrete foundation requirements, and should be evaluated with respect to each site. Consult with a local engineer if site is questionable.
6. Foundation should be poured smooth for proper weather seal and bin anchorage.

1. Chart above has concrete and reinforcing bar quantities for the foundation illustrated. Top of foundation is 4" above grade.
2. For unloading systems that discharge above grade, refer to the following pages.

## FOUNDATION DETAILS FOR BIN WELL & TUBES



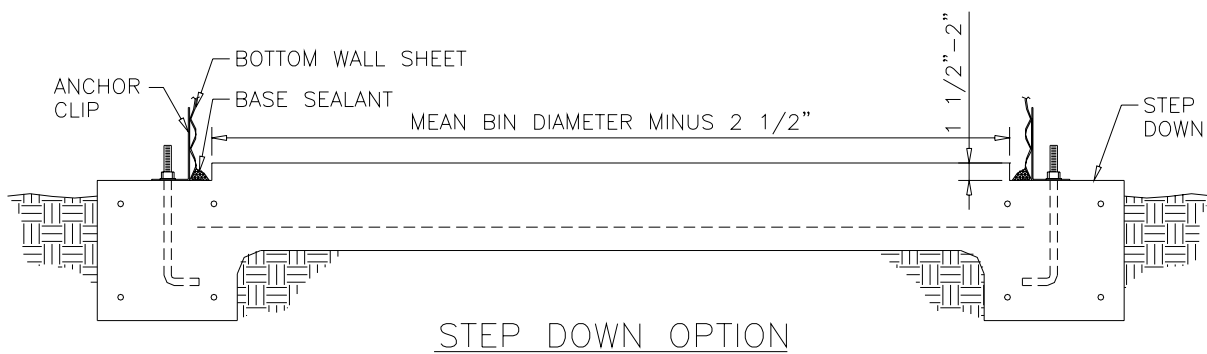
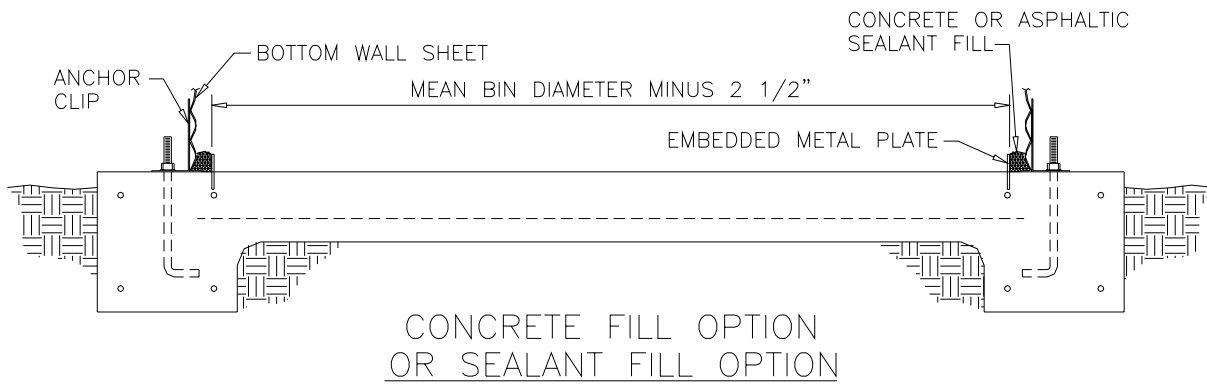
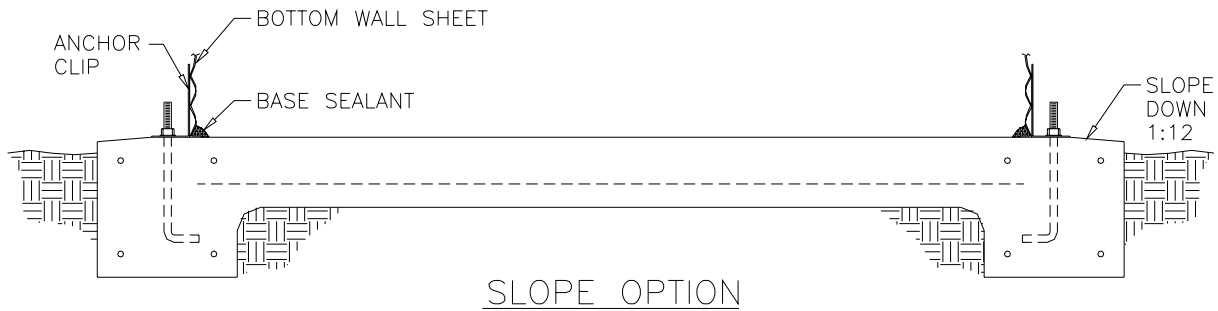
ALTERNATE DETAIL

BIN DIA.	ADD'L YDS. OF CONCRETE	ADD'L LBS. OF REBAR	E	F	G	X	Y	ADD'L CONCRETE REQ'D UNDER WELL & TUBE		
								6"	8"	10"
12'	2.0	77	1'-0"	4"	1 1/2"	2	4"	.3	.4	.6
*14'	2.5	90	1'-0"	4"	1 1/2"	2	4"	.4	.5	.7
15'	2.8	100	1'-0"	4"	1 1/2"	2	4"	.4	.5	.7
18'	3.2	115	1'-0"	5"	2"	2	4"	.5	.7	.9
21'	5.5	134	1'-6"	6"	2"	2	7"	.8	.9	1.0
24'	6.2	152	1'-6"	6"	2"	2	7"	1.1	1.1	1.2
27'	7.0	171	1'-6"	6"	2"	2	7"	1.1	1.2	1.3
30'	10.6	190	2'-1"	6"	2"	3	7"	1.2	1.4	1.5
33'	11.7	202	2'-1"	6"	2"	3	7"	1.3	1.6	1.7
36'	12.8	228	2'-1"	6"	2"	3	7"	1.5	1.7	1.8
39'	14.5	245	2'-1"	6"	2"	3	7"	1.6	1.8	1.9
42'	15.6	264	2'-1"	6"	2"	3	7"	1.7	1.9	1.9

### NOTES:

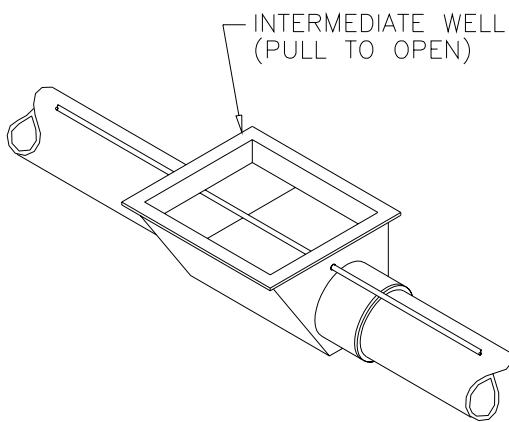
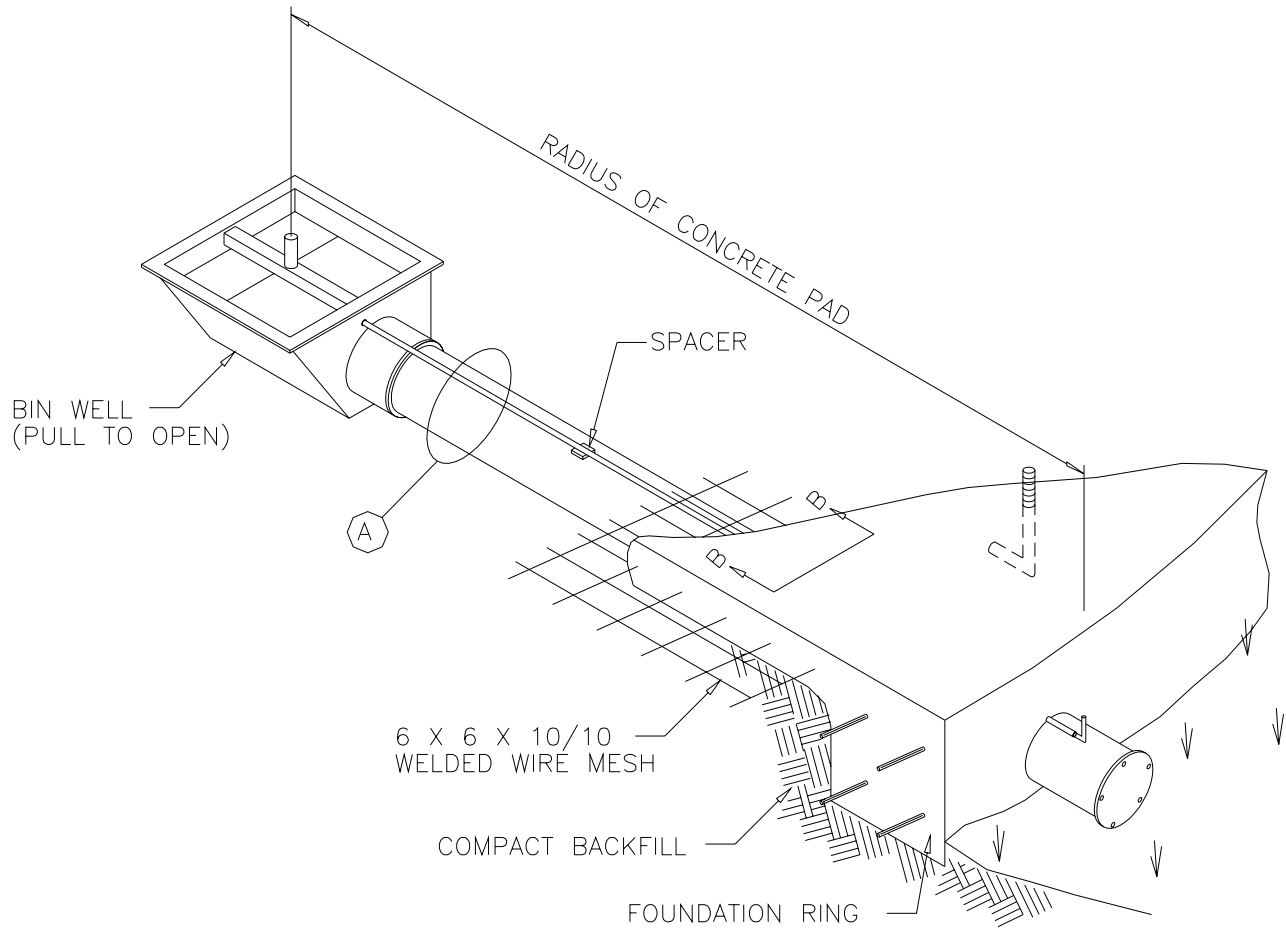
1. See page 7 for general concrete notes.

## FOUNDATION SLAB OPTIONS (FOR A BETTER WEATHER SEAL)

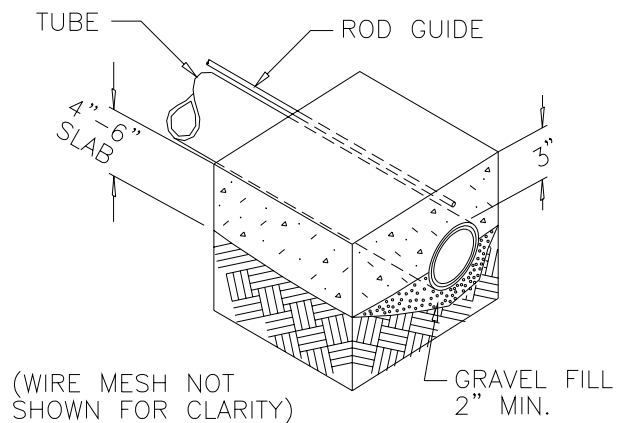


$$\text{MEAN BIN DIAMETER (FEET)} = \frac{(\text{NOMINAL BIN DIAMETER, IN FEET}) \times 112.5}{(3) \times (12) \times (3.1416)}$$

## BIN WELL INSTALLATION

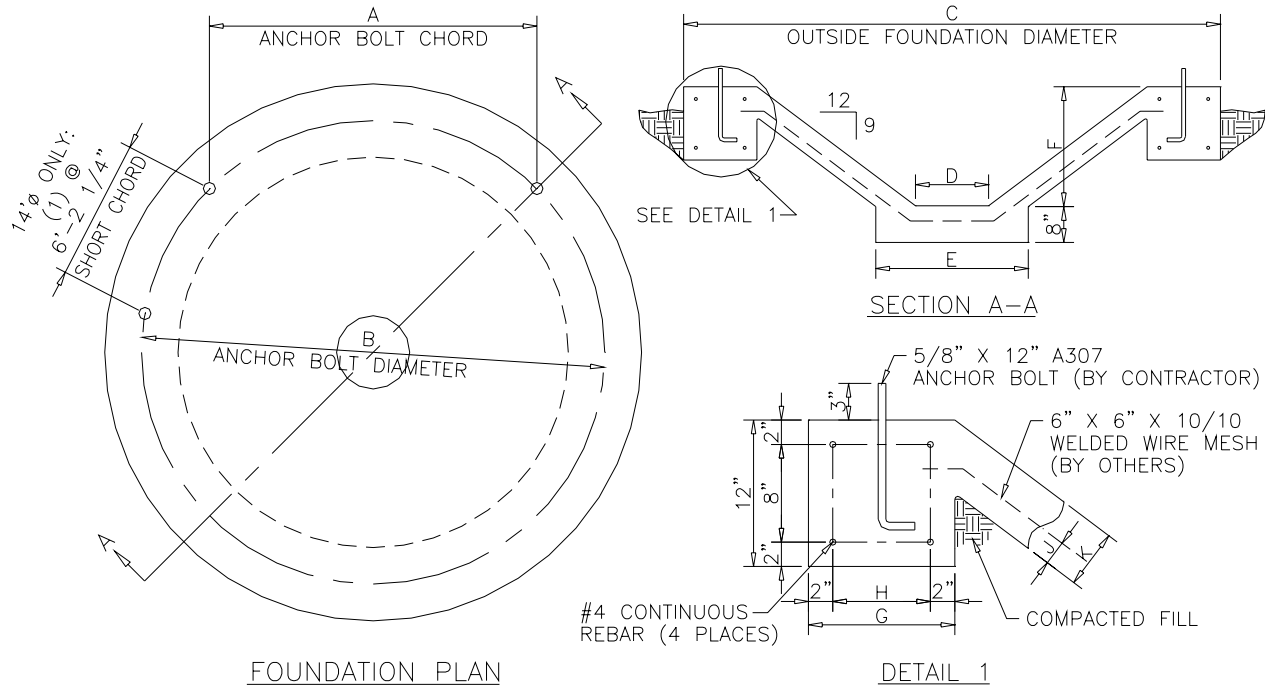


DETAIL A  
OPTIONAL INTERMEDIATE WELL



SECTION B  
FOUNDATION SECTION

## GRAIN BIN CONE FOUNDATION PLAN

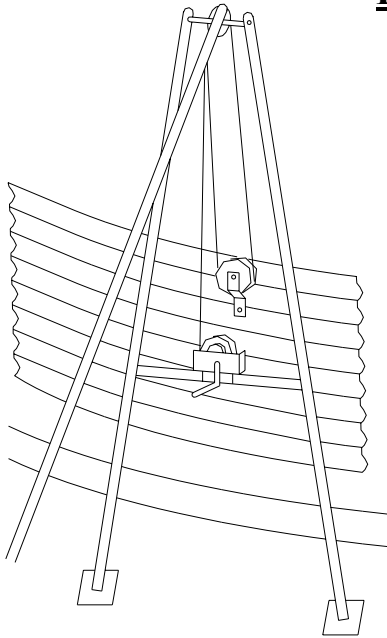


BIN DIA.	QTY. OF ANCHOR BOLTS	LBS. OF #4 REBAR	SQ. FT. WIRE MESH	CU. YDS. CON- CRETE	A	B	C	D	E	F	G	H	J	K
12"	4	103	141	3.7	8'-8 5/16"	12'-3 9/16"	13'-4"	27"	40"	3'-4 3/8"	12"	8"	1 1/2"	4"
*14'	5	120	220	4.0	*8'-10 11/16"	14'-3 7/16"	15'-2"	27"	40"	4'-1"	12"	8"	1 1/2"	4"
15'	5	128	250	4.5	8'-11 3/4"	15'-3 3/8"	16'-4"	27"	40"	4'-6"	12"	8"	1 1/2"	4"
18'	6	153	350	6.8	9'-1 7/16"	18'-3 3/16"	19'-2"	27"	44"	5'-7"	12"	8"	2"	5"
21'	7	178	475	10.8	9'-2 1/2"	21'-3"	22'-4"	27"	47"	6'-5"	18"	14"	2"	6"
24'	8	203	625	13.5	9'-3 3/16"	24'-2 13/16"	25'-2"	27"	47"	7'-6"	18"	14"	2"	6"
27'	9	228	780	16.6	9'-3 5/8"	27'-2 5/8"	28'-2"	30"	50"	8'-6"	18"	14"	2"	6"
30'	10	253	940	20.7	9'-3 7/8"	30'-2 3/8"	31'-2"	30"	50"	9'-2"	25"	21"	2"	6"
33'	11	270	1145	24.4	9'-4 1/8"	33'-2 1/4"	34'-2"	30"	50"	10'-4"	25"	21"	2"	6"
36'	24	304	1350	28.6	4'-8 5/8"	36'-2"	37'-2"	30"	50"	11'-5"	25"	21"	2"	6"
39'	26	330	1665	41.3	4'-8 21/32"	39'-1 7/8"	41'-2"	30"	50"	12'-11"	25"	21"	2"	6"
42'	42	354	1870	44.4	3'-1 13/16"	42'-1 5/8"	44'-2"	30"	50"	14'-1"	25"	21"	2"	6"

### GENERAL CONCRETE NOTES:

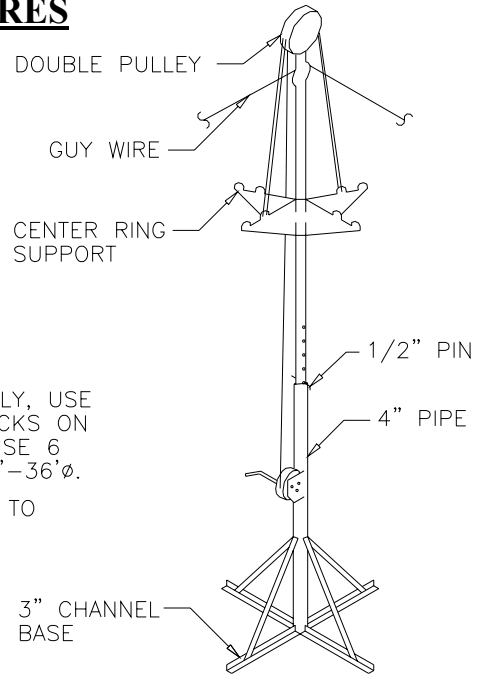
1. Site must be 95% compacted soil back-fill or undisturbed soil. Site must be free from standing water and well drained.
2. Soil around footing ring must be uniform. (Not fine sand)
3. Foundation design is based on uniform soil bearing capacity of 2000 lb. per square foot. Concrete compressive strength at 28 days shall be 2500 psi.
4. Add (1) pound to rebar requirements for each end lap. Lap bars 15".
5. These are general concrete foundation requirements, and should be evaluated with respect to each site. Consult with a local engineer if site is questionable.
6. Foundation should be poured smooth for proper weather seal and bin anchorage.

## ERECTION PROCEDURES



A-FRAME JACK WITH WINCH

5:1 GEAR RATIO WITH 5000 LB. LIFTING CAPACITY,  
5/16" AIRCRAFT CABLE USED WITH WINCH.



ROOF JACK CONSTRUCTION

### SAFETY NOTES:

1. TO RAISE BINS SAFELY, USE A MINIMUM OF 4 JACKS ON BINS UP TO 24'Ø, USE 6 JACKS FOR BINS 27'-36'Ø.
2. LIFT BIN UNIFORMLY TO AVOID TIPPING.

### INSTALLATION NOTES:

#### **HAND TIGHTEN ALL BOLTS.**

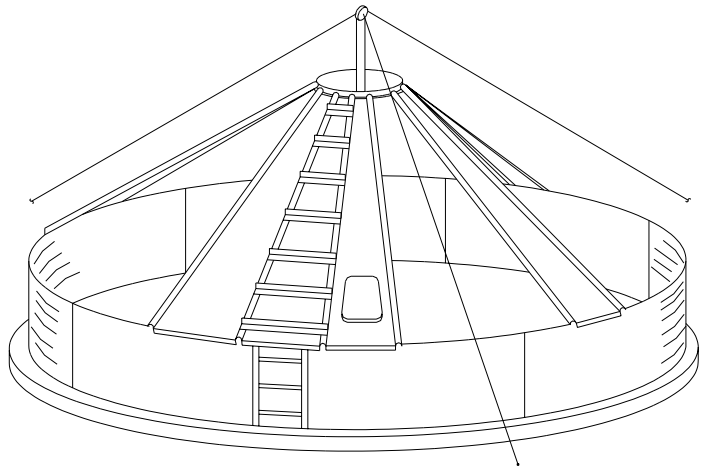
1. Place roof segment ring on center ring support.
2. Assemble top wall sheet ring. Make sure top holes are at 3 1/8" spacing. Holes at bottom of sheet will be at 9 3/8" spacing.
3. Position the roof hatch panel next to the desired sidewall ladder location & fasten to segment ring. Attach the roof center clip to roof panel and put the lower edge of panel on the wall sheet ring.
4. Continue with rest of roof panels by alternating around circumference of bin until all panels are installed. Also attach center clips & rib clips to roof panels and wall sheets as you go. (39' & 42' bins also add roof rib supports).
5. The last roof panel should be next to the roof hatch panel. Attach roof ladder cleats while bolting roof panels together. See next page for bolt size.

**CAUTION:** As last roof panel is installed, you may incur the following:

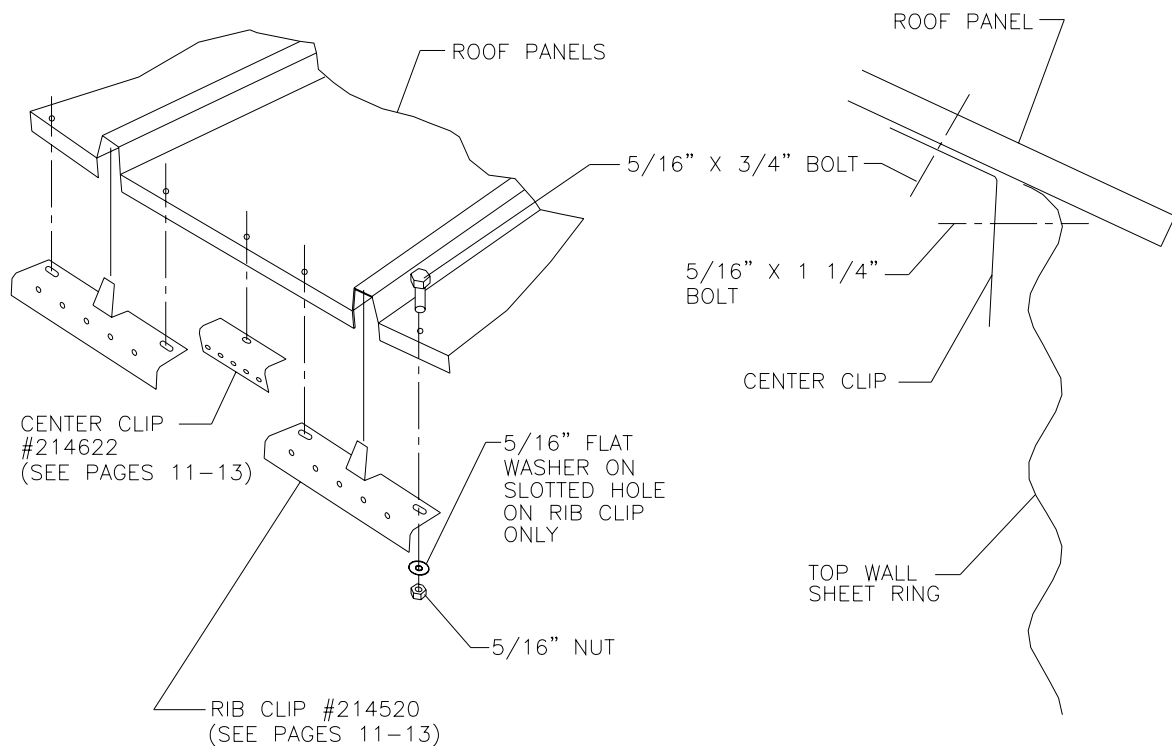
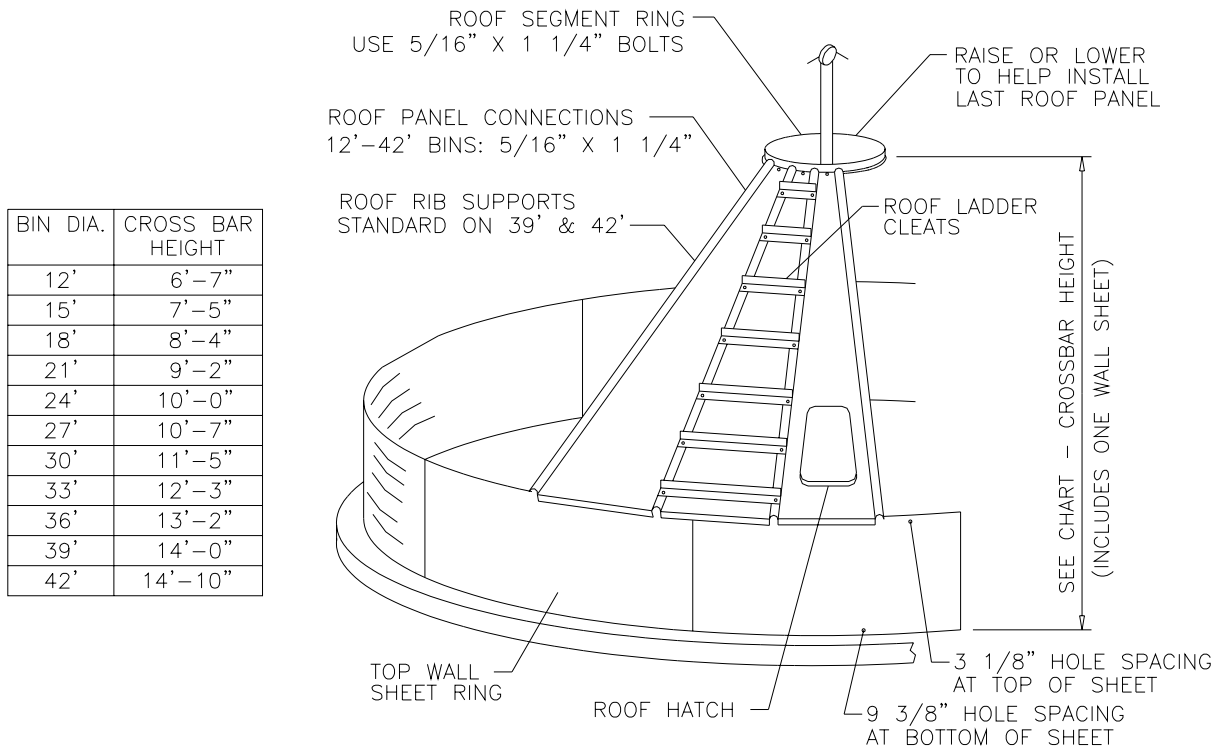
Too much space – Raise roof jack. This will close the gap.

Too little space – Lower the roof jack. This will lessen the slope & increase the space required.

6. Refer to next page for details on center clips, rib clips and cleats.
7. With everything in place, tighten all roof bolts.



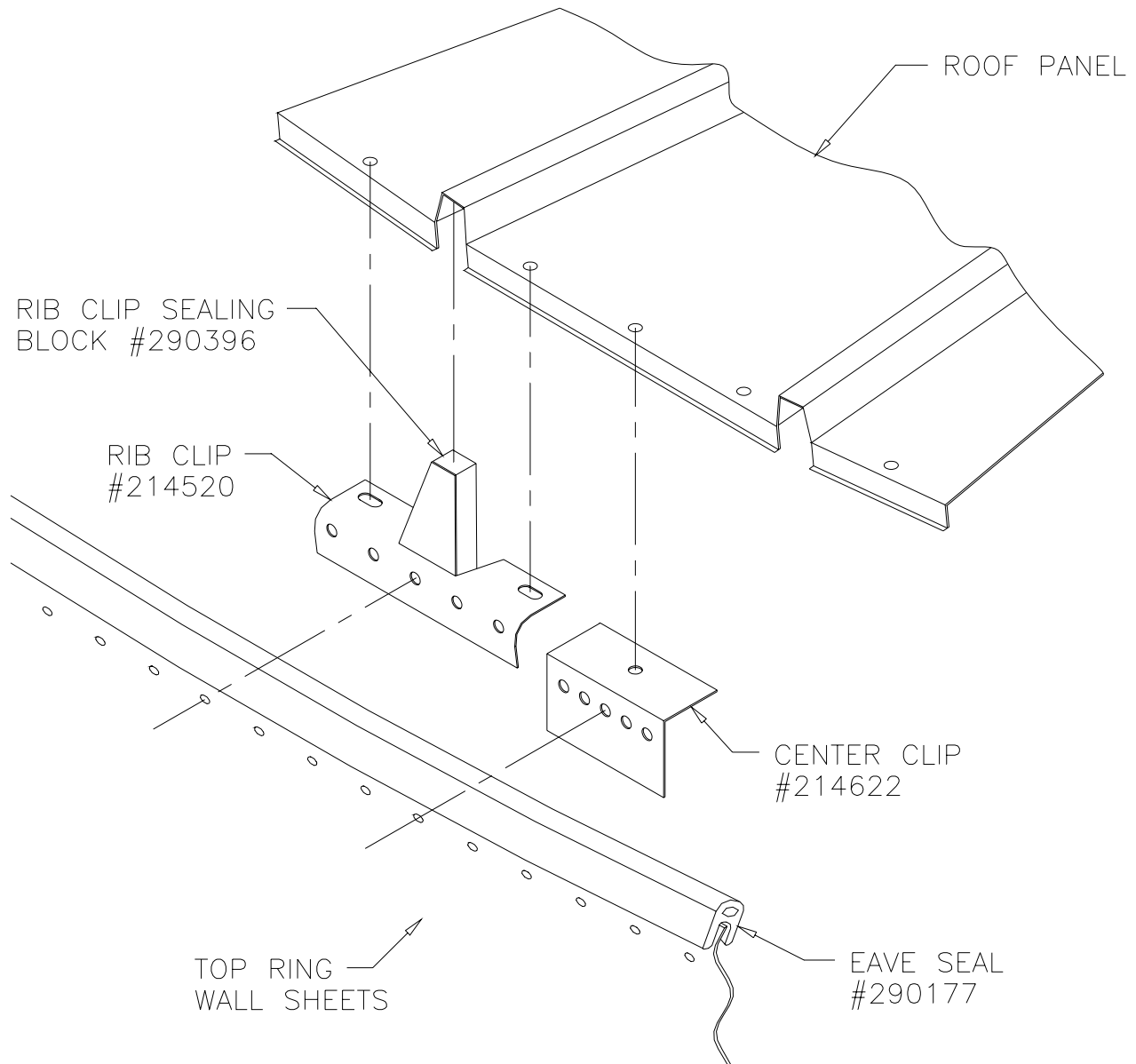
## ROOF INSTALLATION DETAILS



### **NOTE:**

Follow installation instructions on previous page.

**RIB CLIP & EAVE SEAL INSTALLATION**  
(OPTIONAL PURCHASE)



**NOTES:**

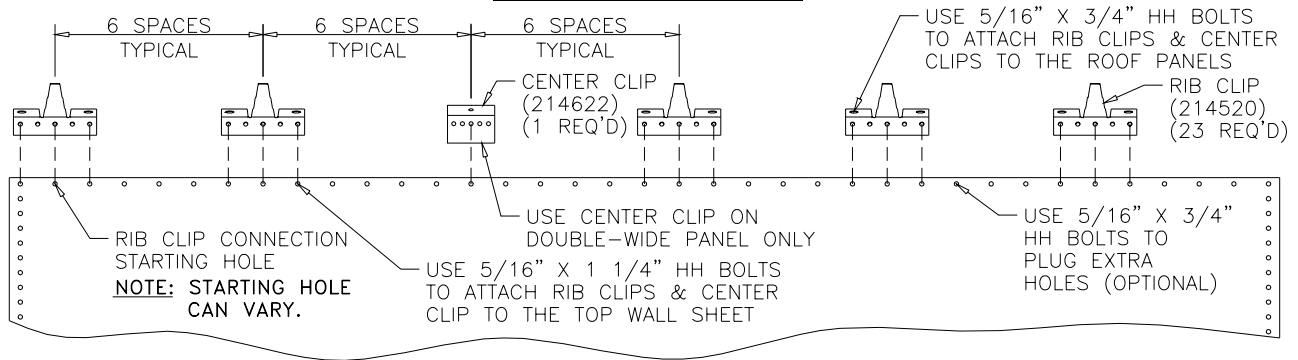
1. Install eave seal around top edge of wall sheets.
2. Glue rib clip sealing block to rib clip (1 per clip).
3. Bolt center clips and rib clips to wall sheets and roof panels as shown.
4. Fill all unused holes w/ 5/16" x 3/4" bolts.

When installed properly, silo will have a weather tight seal.

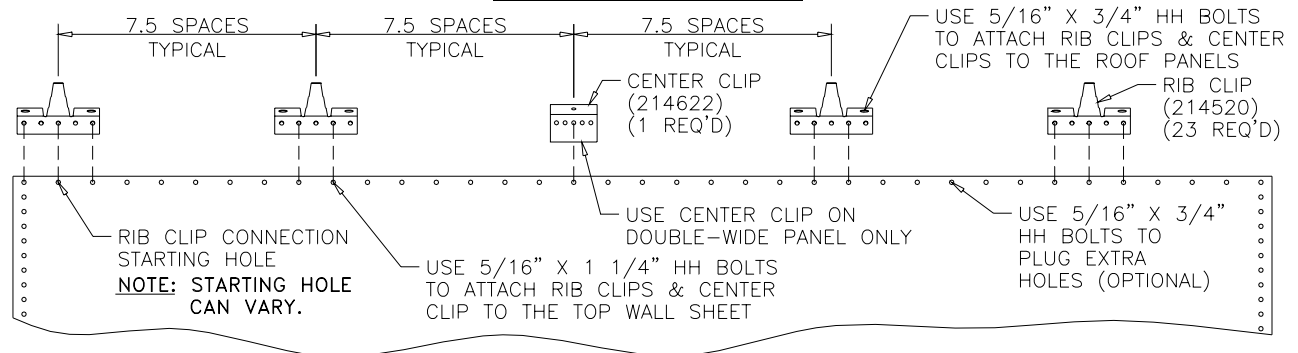


## RIB & CENTER CLIP CONNECTIONS

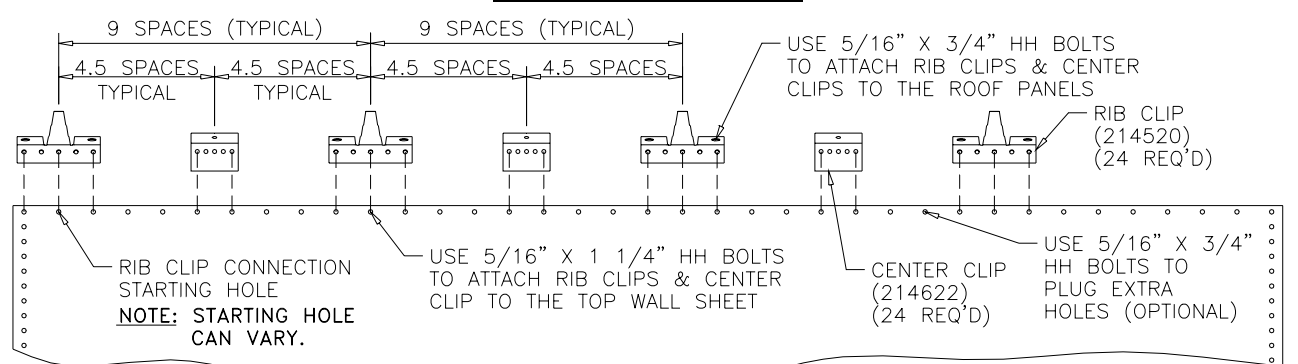
### 12' DIAMETER BINS



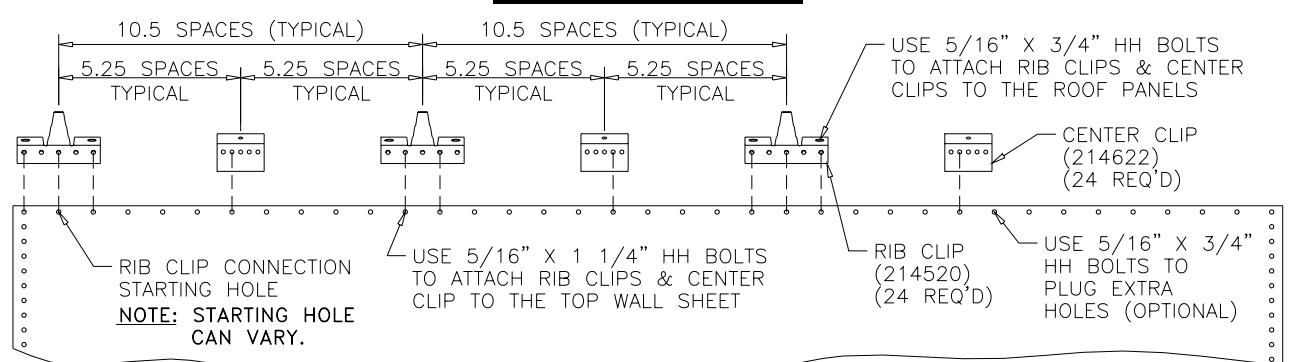
### 15' DIAMETER BINS



### 18' DIAMETER BINS

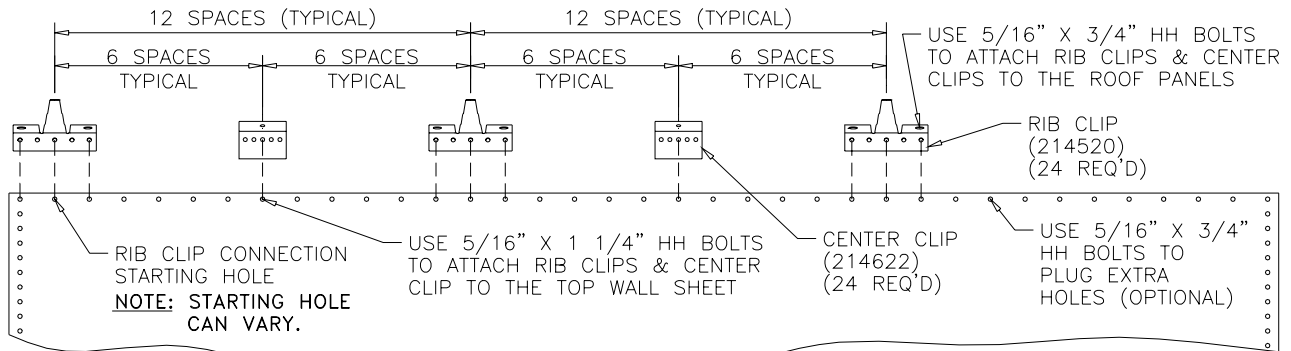


### 21' DIAMETER BINS

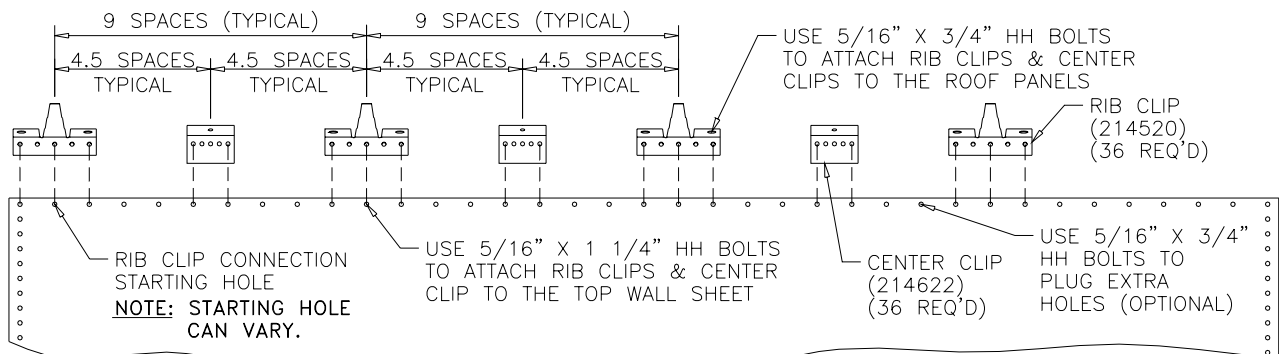


## RIB & CENTER CLIP CONNECTIONS

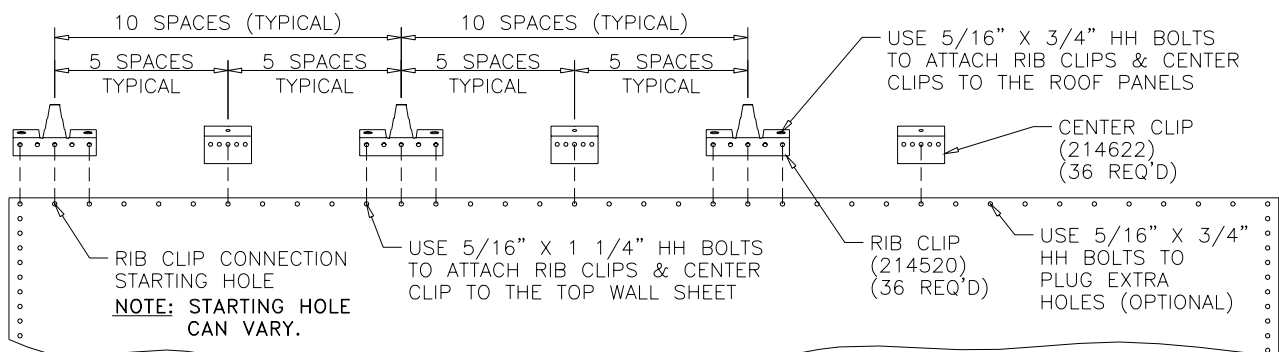
### 24' DIAMETER BINS



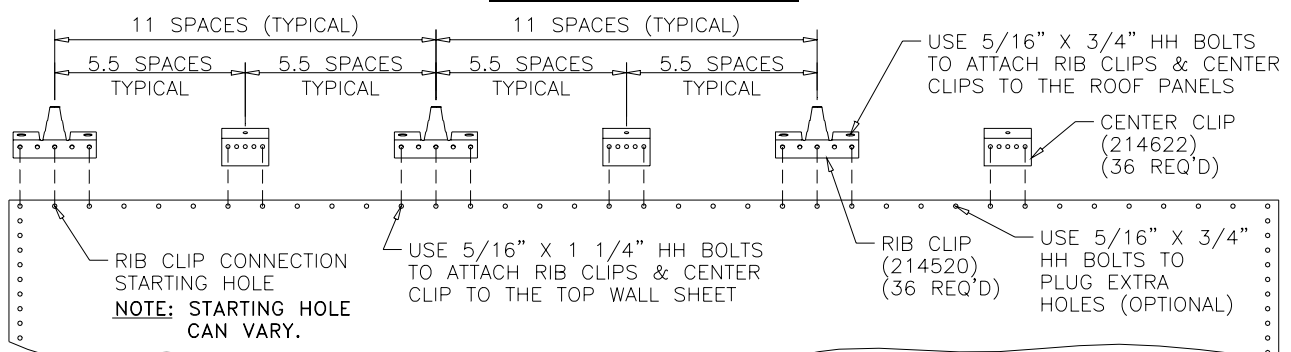
### 27' DIAMETER BINS



### 30' DIAMETER BINS

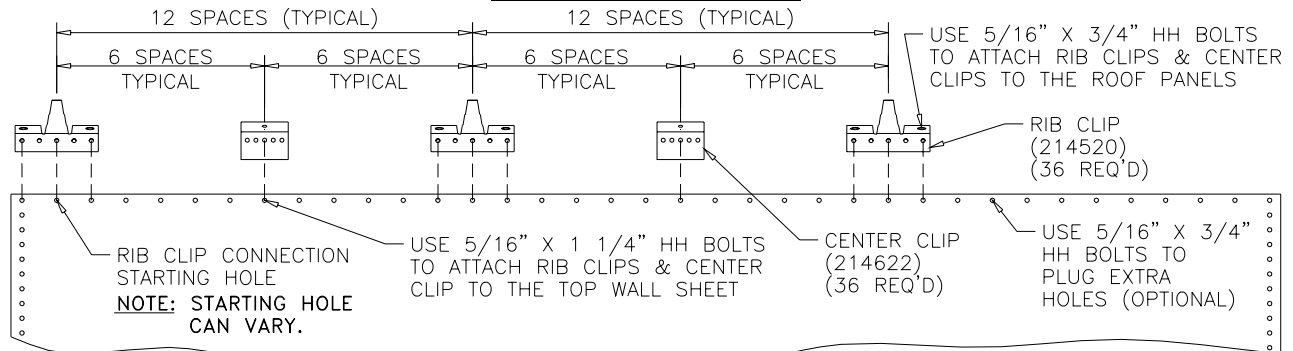


### 33' DIAMETER BINS

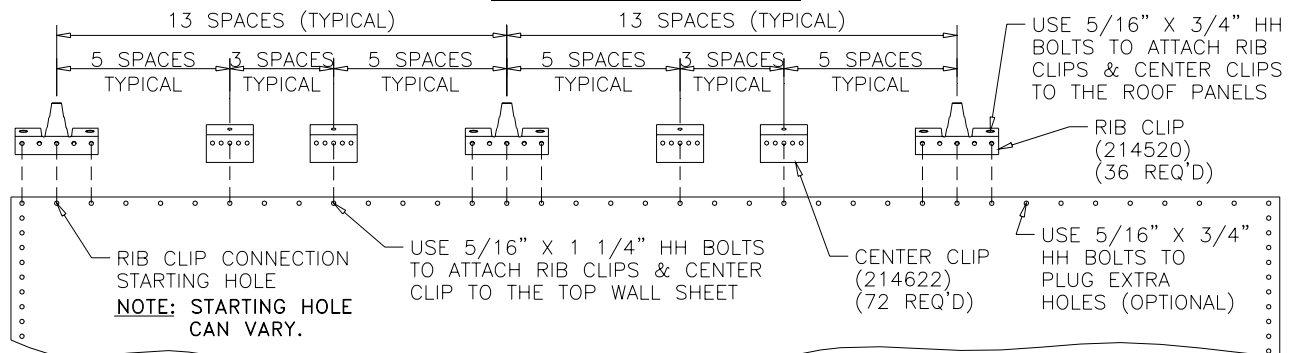


## RIB & CENTER CLIP CONNECTIONS

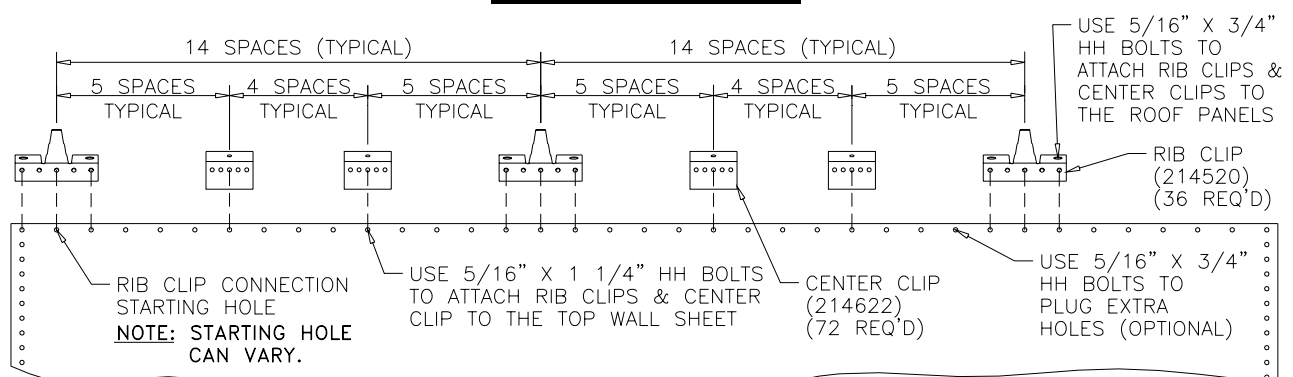
### 36' DIAMETER BINS



### 39' DIAMETER BINS

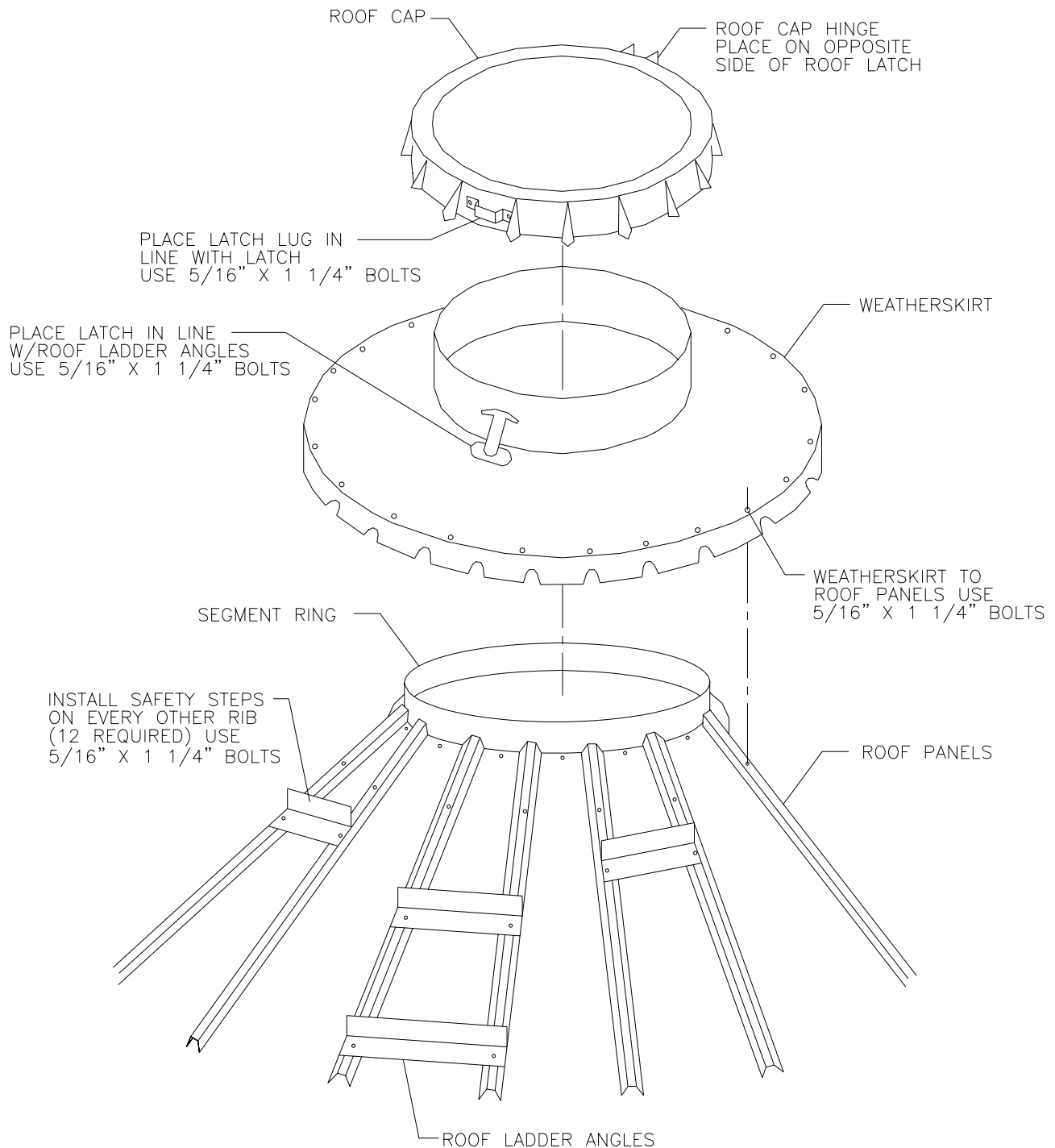


### 42' DIAMETER BINS



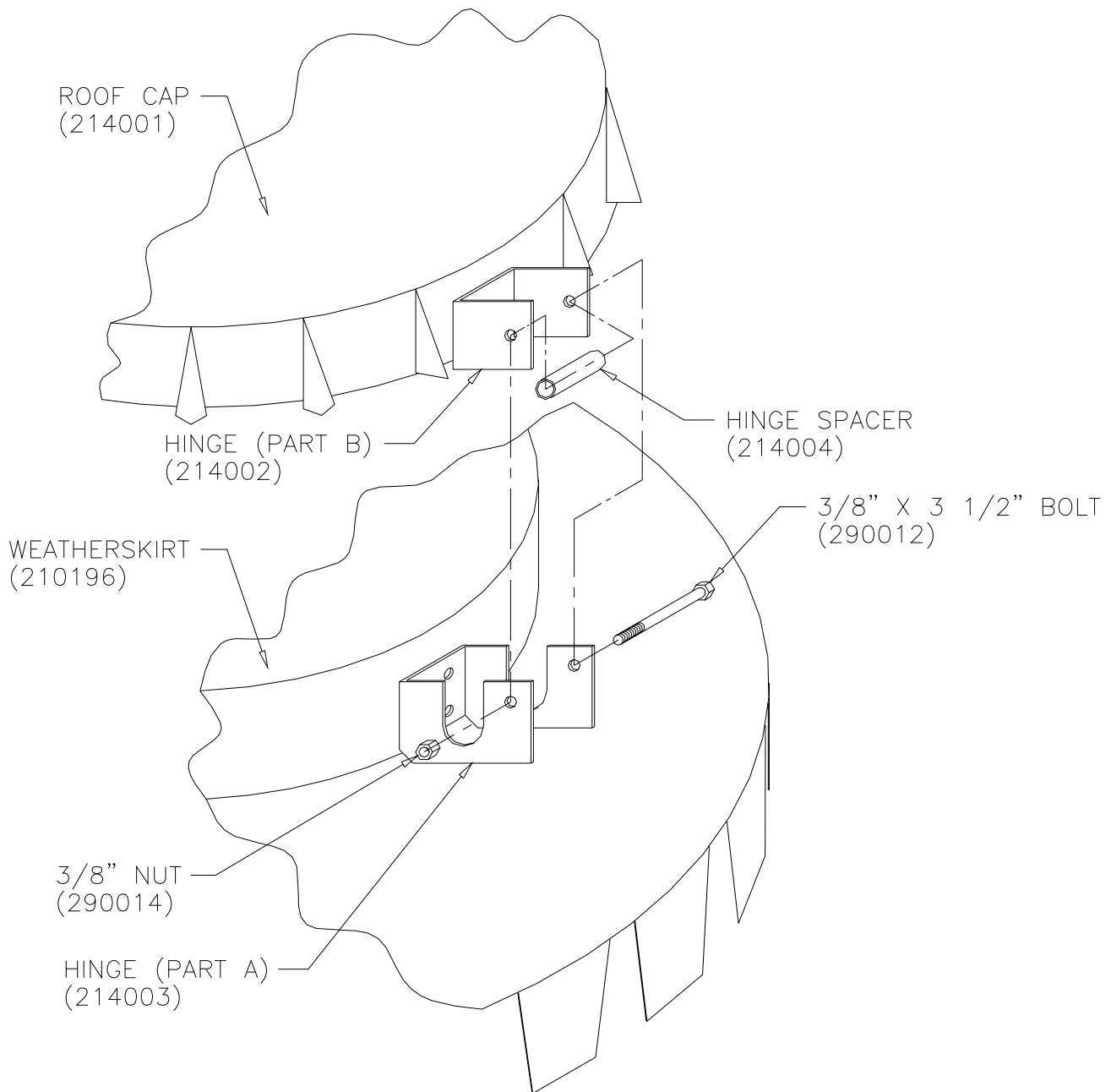
**WEATHERSKIRT & CAP INSTALLATION**

12' – 24' DIAMETER BINS



## ROOF CAP HINGE INSTALLATION

12' – 24' DIAMETER BINS



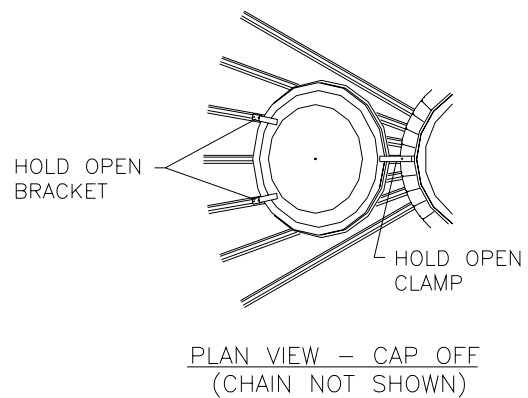
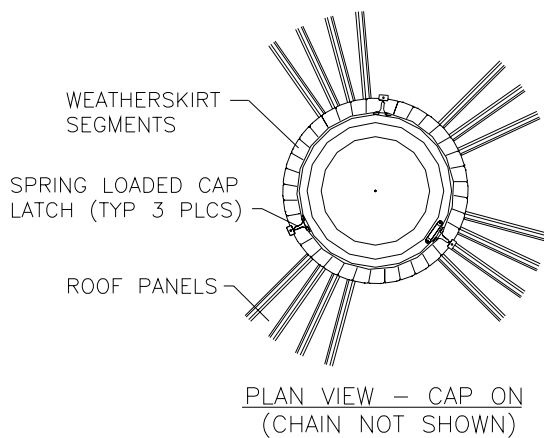
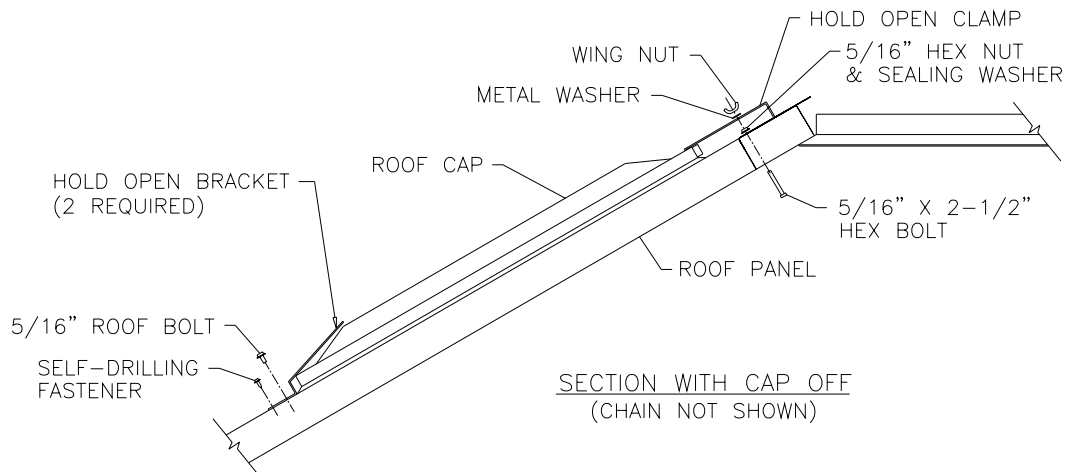
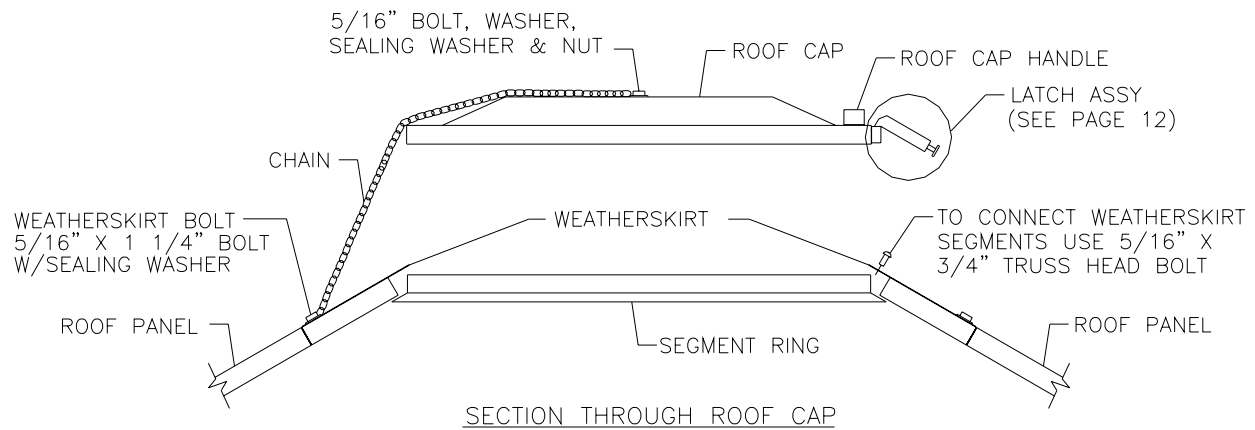
### NOTES:

1. Connect hinge (part B) (214002) to roof cap (214001) using (2) 5/16" x 3/4" hh bolt (290001) & 5/16" hex nut (290010).
2. Connect hinge (part A) (214003) to weatherskirt (210196) using (4) 5/16" x 3/4" hh bolt (290001) & 5/16" hex nut (290010).

Assemble together using hinge spacer (214004) & 3/8" x 3 1/2" hh bolt (290012) & 3/8" hex nut (290014) as shown.

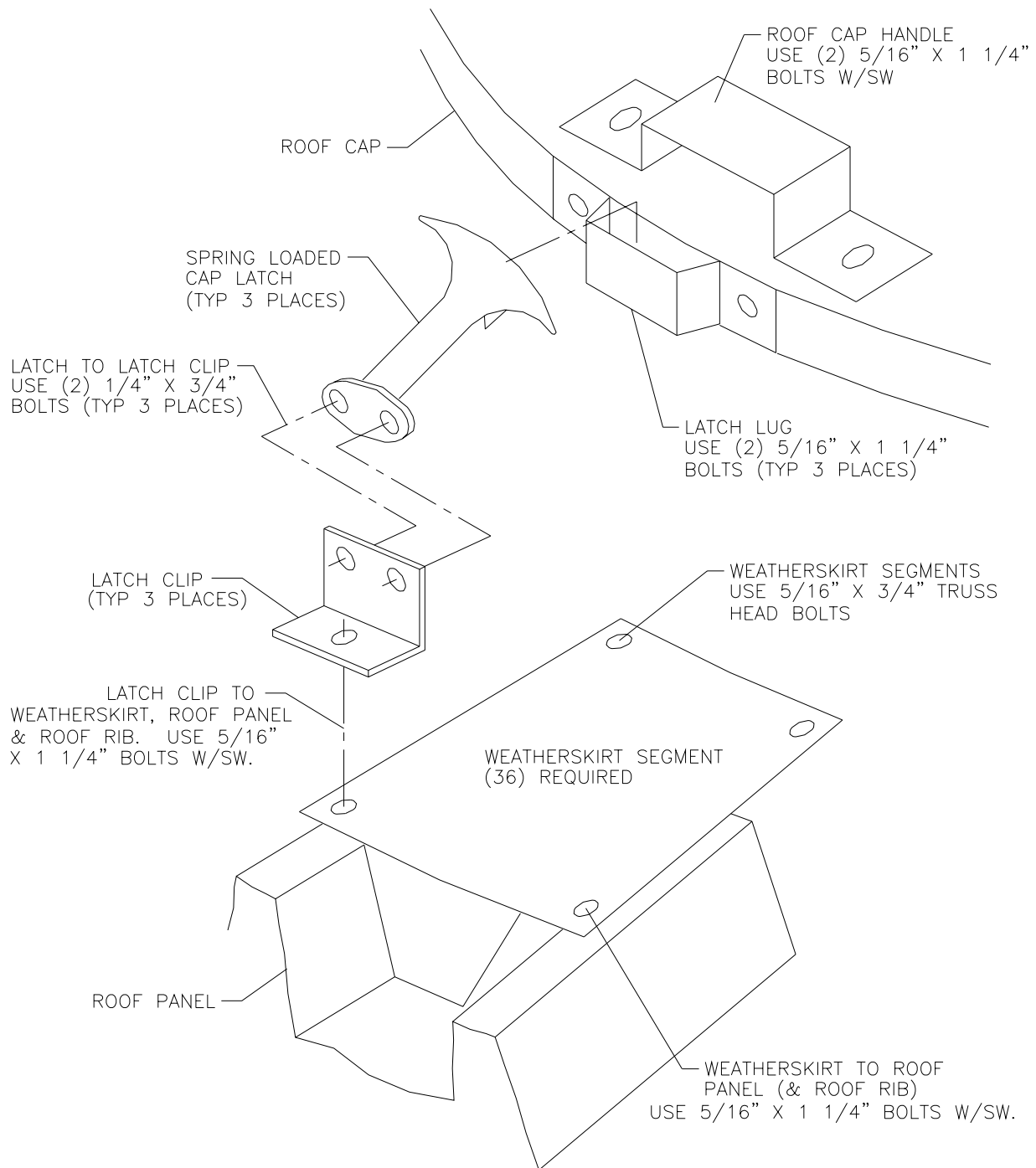
## ROOF CAP ASSEMBLY

27' – 42' DIAMETER BINS



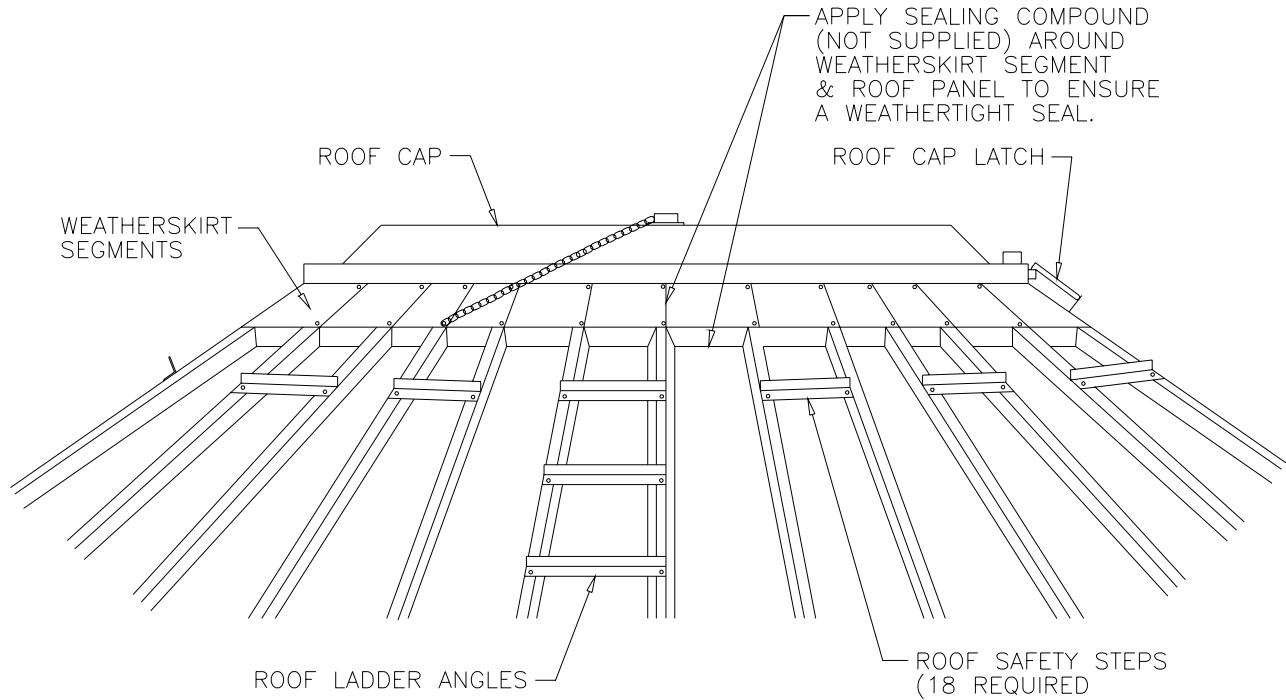
## ROOF CAP ASSEMBLY

27' – 42' DIAMETER BINS



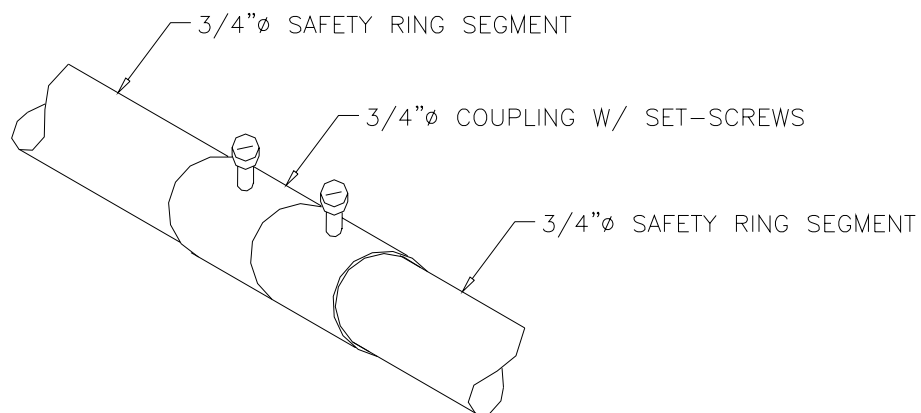
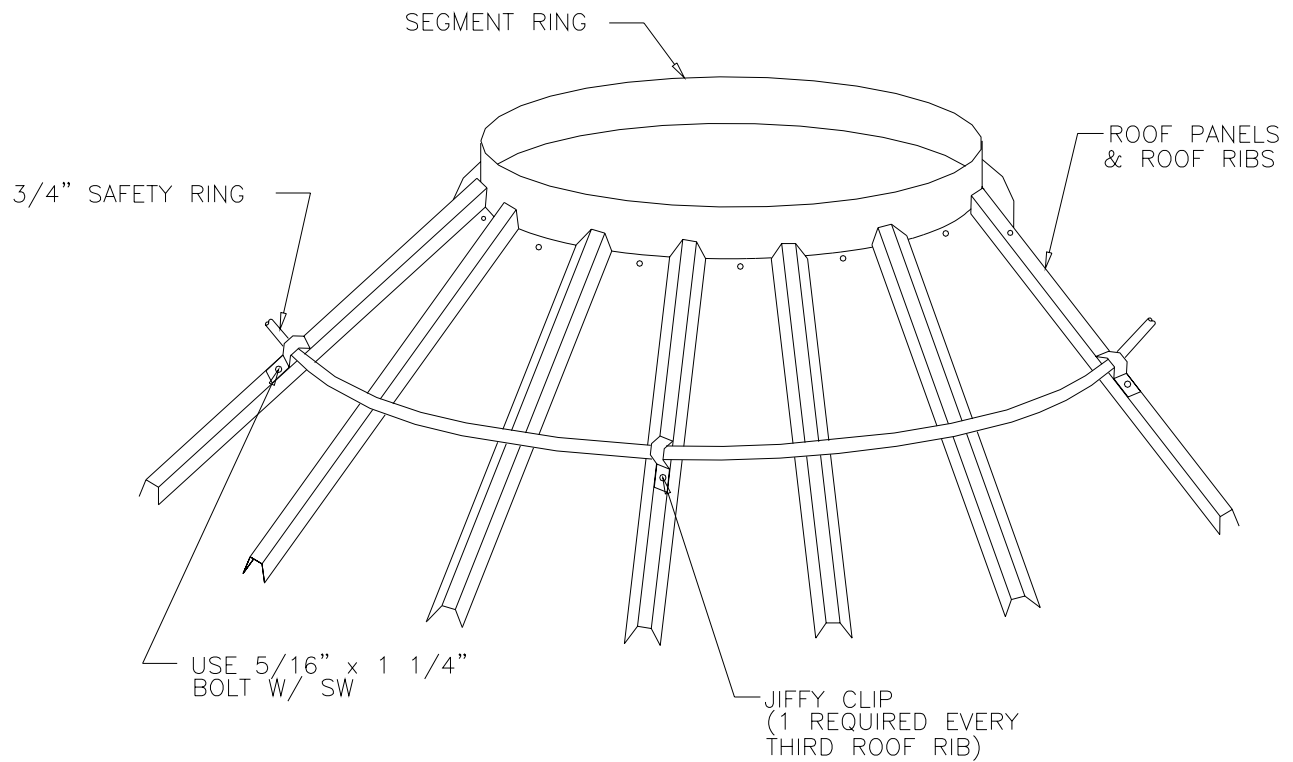
**COMPLETE ROOF CAP ASSEMBLY**

27' – 42' DIAMETER BINS





## OPTIONAL SAFETY RING INSTALLATION (IN PLACE OF SAFETY STEPS)



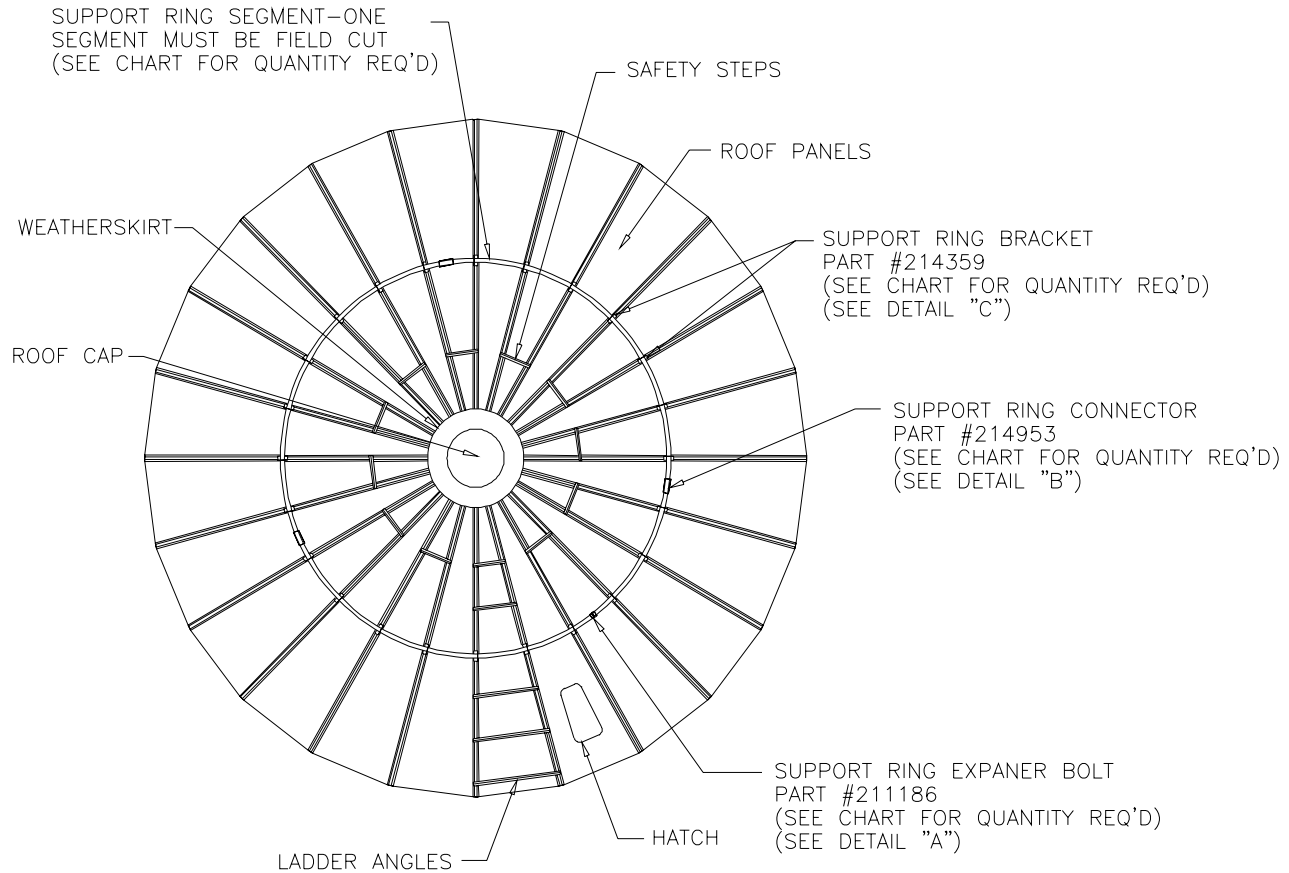
SEGMENT JOINT DETAIL

**NOTE:**

Safety ring segment is curved to bin roof diameter. Field cut last segment to required length before joining with 3/4" coupling.

## **ROOF SUPPORT RING INSTALLATION**

**STANDARD ON 39' & 42' BINS ONLY**  
**(OPTIONAL PURCHASE ON OTHER BIN DIAMETERS)**



TOP VIEW

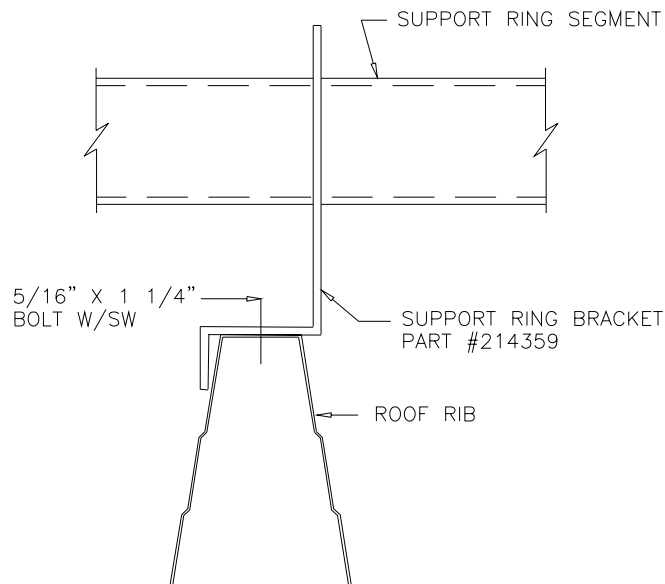
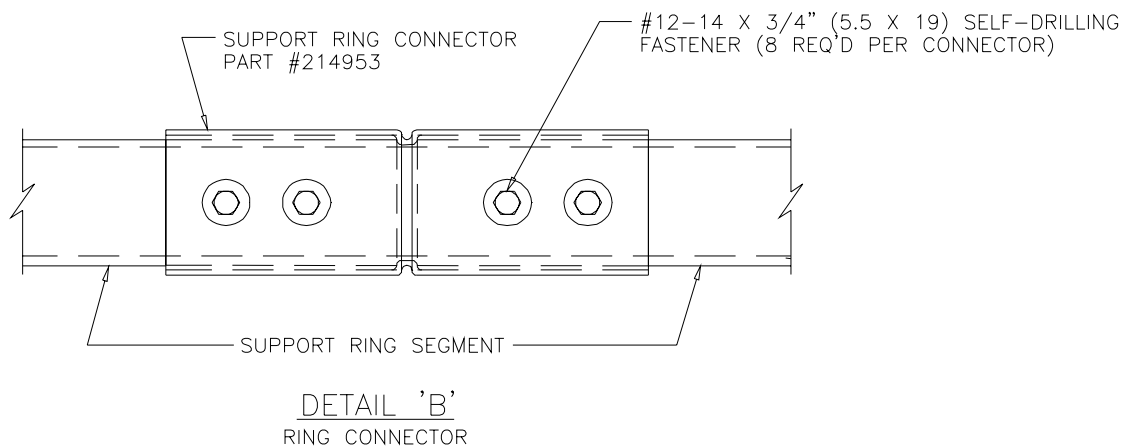
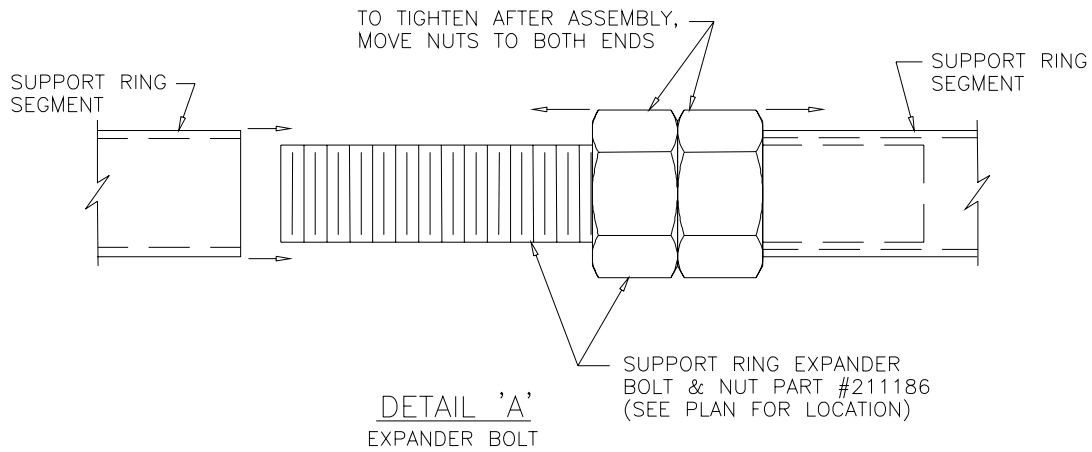
BIN SIZE	NUMBER OF RIB BRACKETS	NUMBER OF SEGMENTS	NUMBER OF EXPANSION BOLTS	*LOCATION OF SUPPORT RING BRACKET	NUMBER OF SUPPORT RING CONNECTORS	ROOF SUPPORT RING ASSEMBLY
42'	36	7	2	7	5	STANDARD
39'	36	6	1	7	5	STANDARD
36'	36	6	1	6	5	OPTIONAL
33'	36	6	1	5	5	OPTIONAL
30'	36	6	1	5	5	OPTIONAL
27'	36	5	1	4	4	OPTIONAL
24'	24	5	1	4	4	OPTIONAL
21'	24	4	1	4	3	OPTIONAL
18'	24	3	1	4	2	OPTIONAL
15'	24	3	1	3	2	OPTIONAL
12'	24	3	1	2	2	OPTIONAL

\*NUMBER OF HOLES FROM BOTTOM OF ROOF SHEET

**NOTE:**

Go to page 25 for detail drawings.

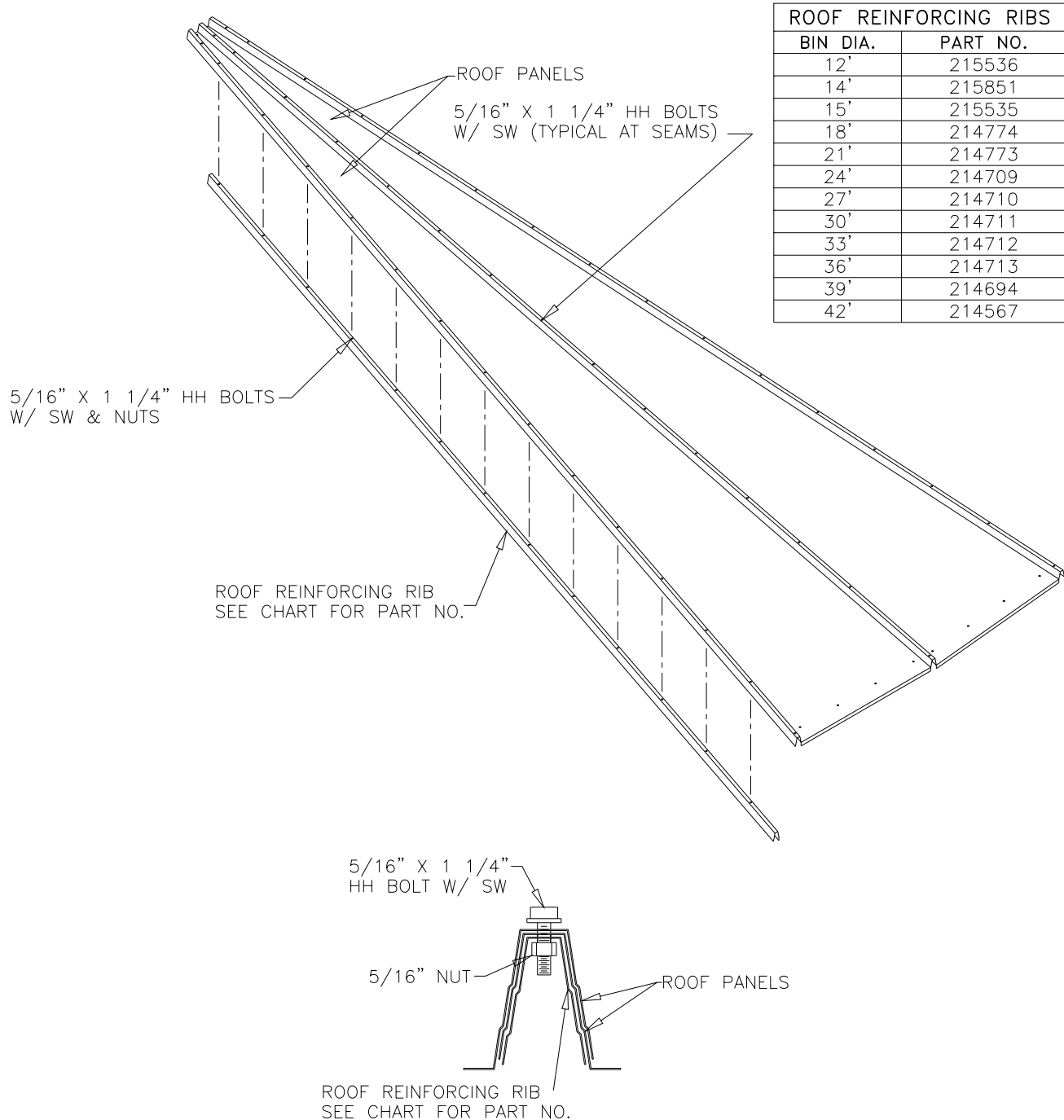
## ROOF SUPPORT RING DETAILS



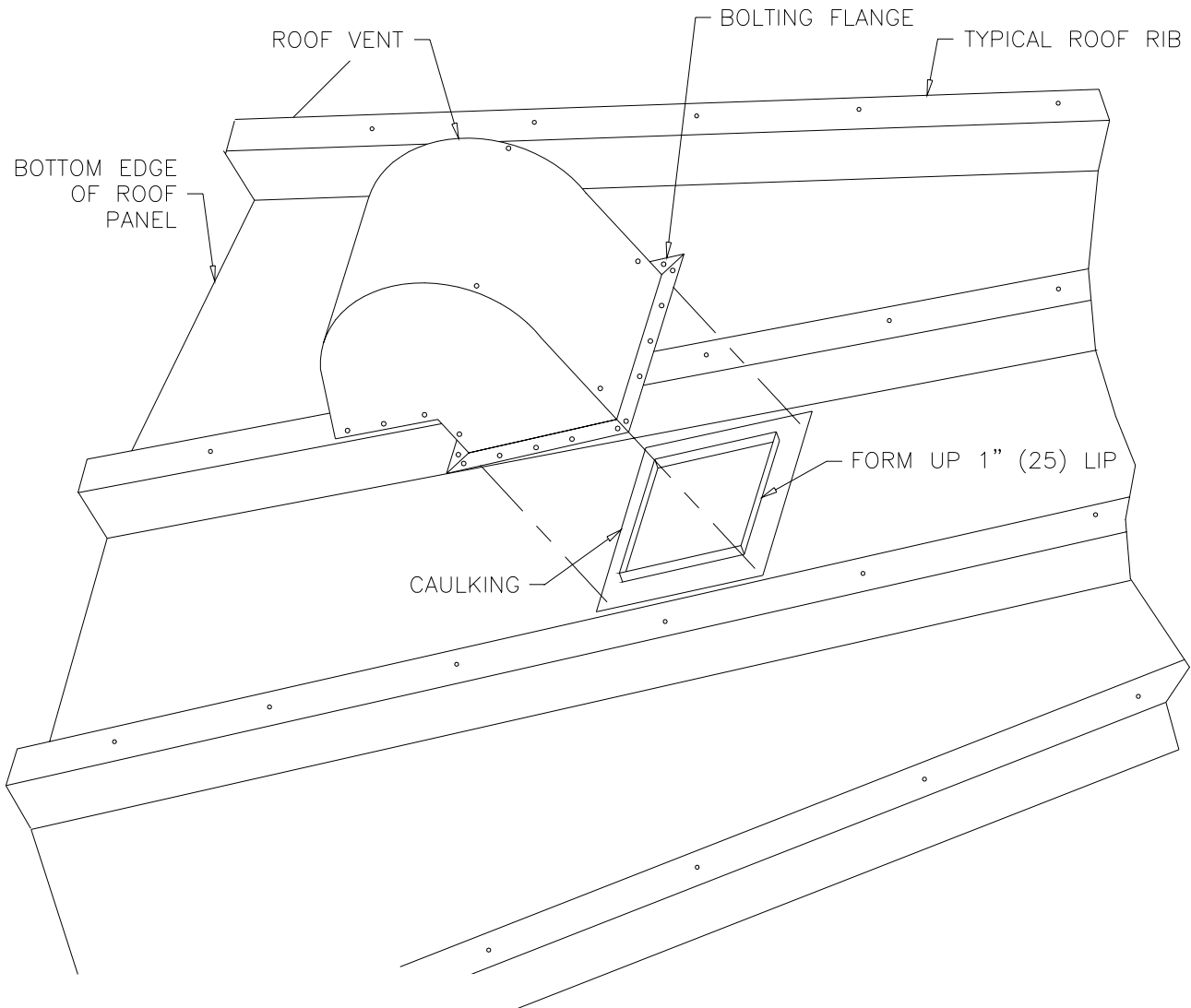
DETAIL 'C'  
SUPPORT RING BRACKET  
TO ROOF CONNECTION

## ROOF REINFORCING RIB INSTALLATION

STANDARD ON 39' & 42' BINS ONLY  
(OPTIONAL PURCHASE ON OTHER BIN DIAMETERS)



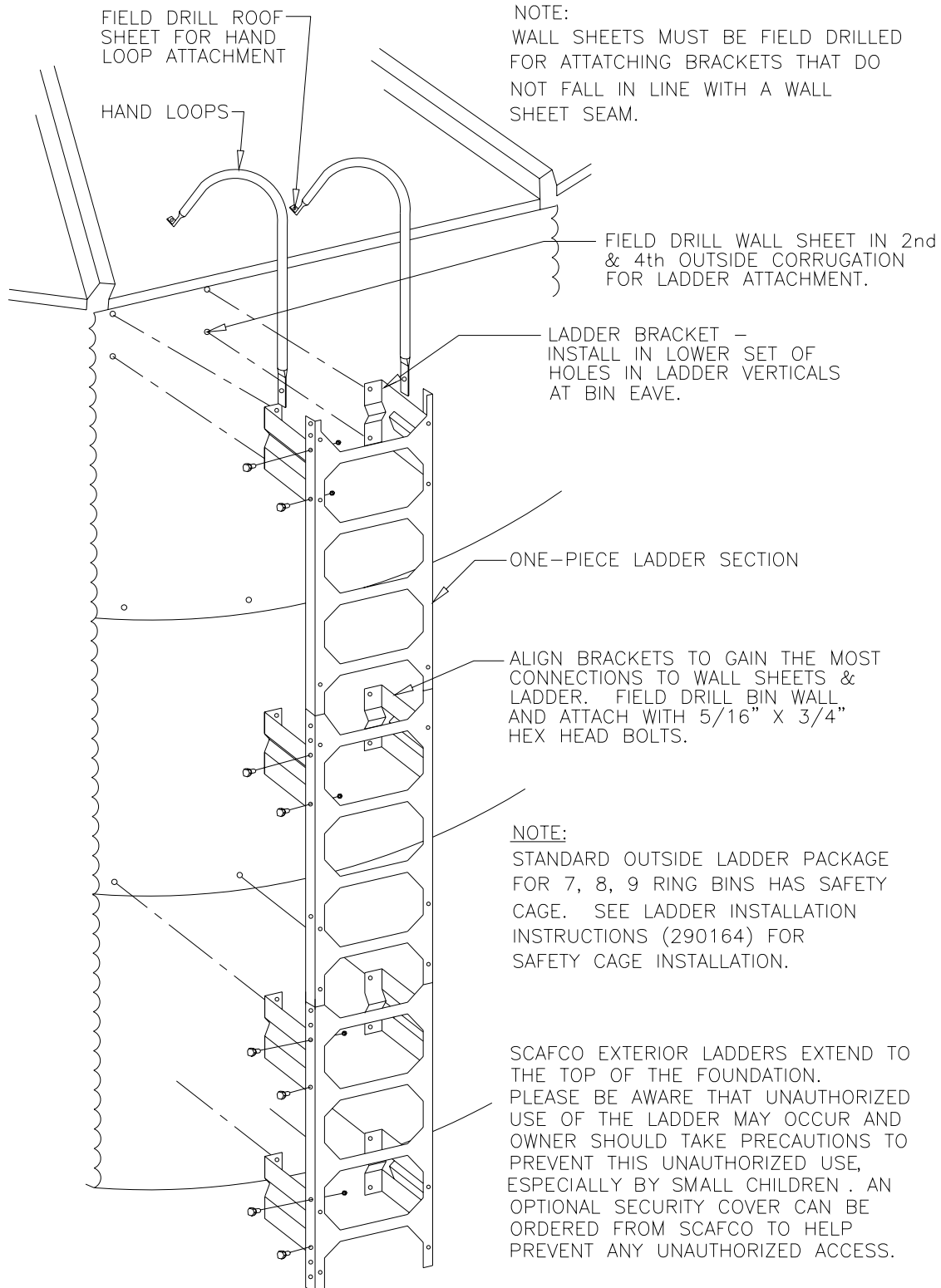
**ROOF VENT INSTALLATION**  
(OPTIONAL PURCHASE)



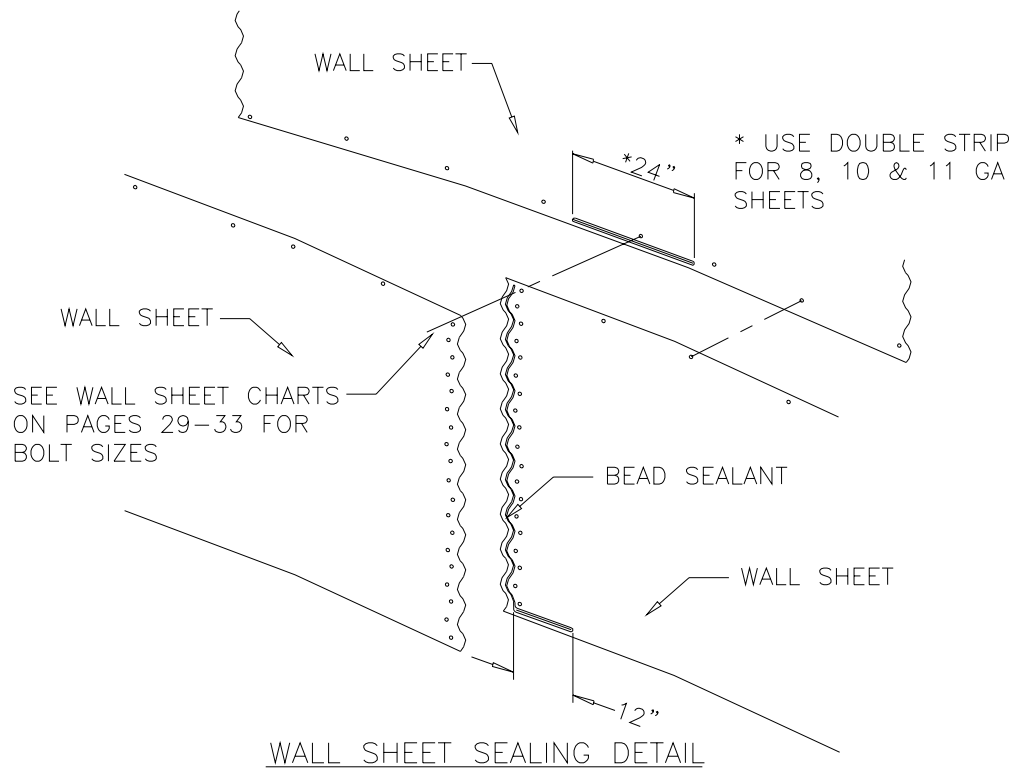
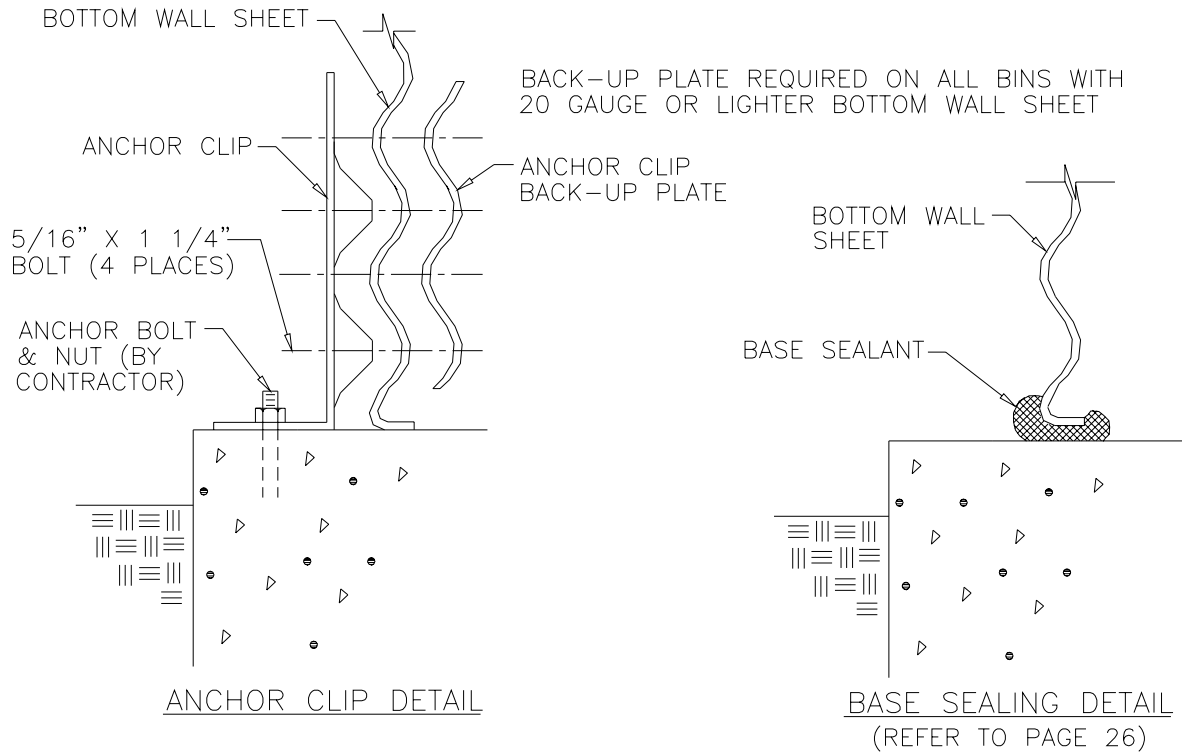
**INSTALLATION INSTRUCTIONS FOR ROOF VENT**

1. Locate roof vent between roof ribs, as close to top of roof as possible, with vent opening on downhill side.
2. Cut opening in roof panel 2" smaller than vent opening. Form a 1" lip up toward inside of vent to provide a water stop.
3. Apply adequate amount of weather-seal caulking at vent bolting flange to prevent leakage.
4. Attach roof vent to roof panel with bolts. Drill holes as required to fasten vent securely to roof panel.
5. Roof vent is manufactured entirely of galvanized sheet metal to prevent rusting; however, if vent is welded to roof, rusting will occur.

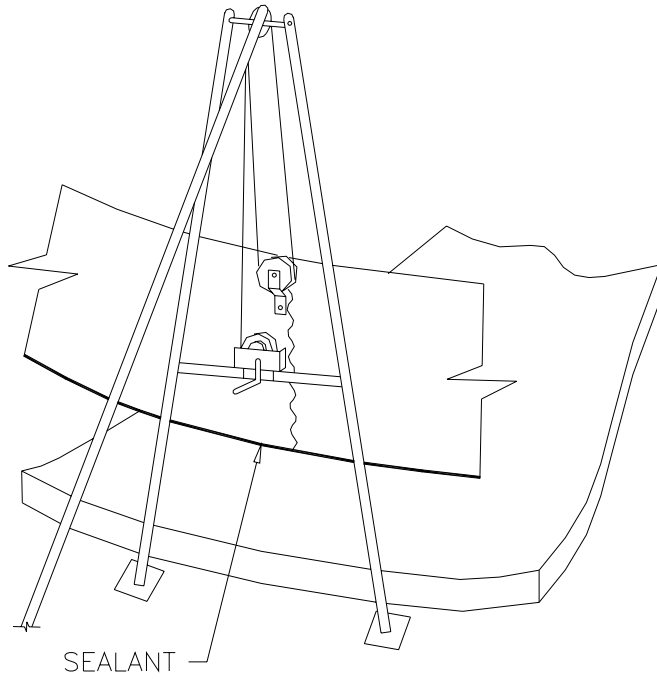
## EXTERIOR LADDER INSTALLATION (OPTIONAL PURCHASE)



## ANCHORING & SEALING DETAILS

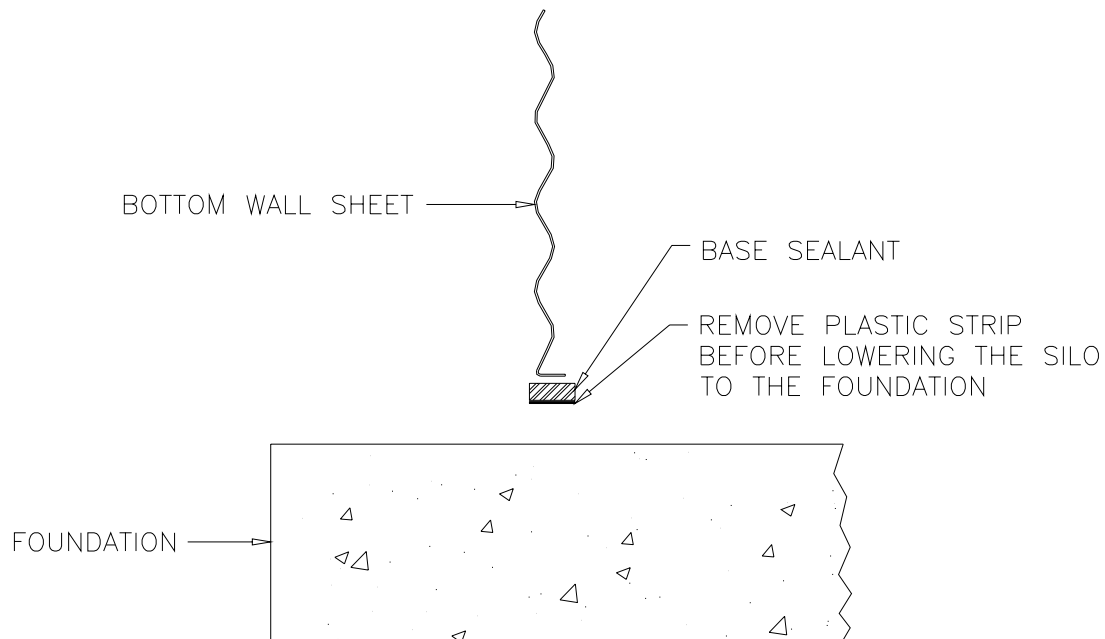


**BASE SEALANT APPLICATION**  
(OPTIONAL PURCHASE)



1. APPLY SEALANT ALONG LIP OF BOTTOM RING WHILE SILO IS STILL ON JACKS.
2. REMOVE PLASTIC STRIP OFF SEALANT.
3. LOWER SILO ONTO THE FOUNDATION. WHEN SILO IS LOWERED, SEALANT WILL DISTRIBUTE PROPERLY AND PROVIDE A SEAL BETWEEN THE SILO AND THE FOUNDATION.

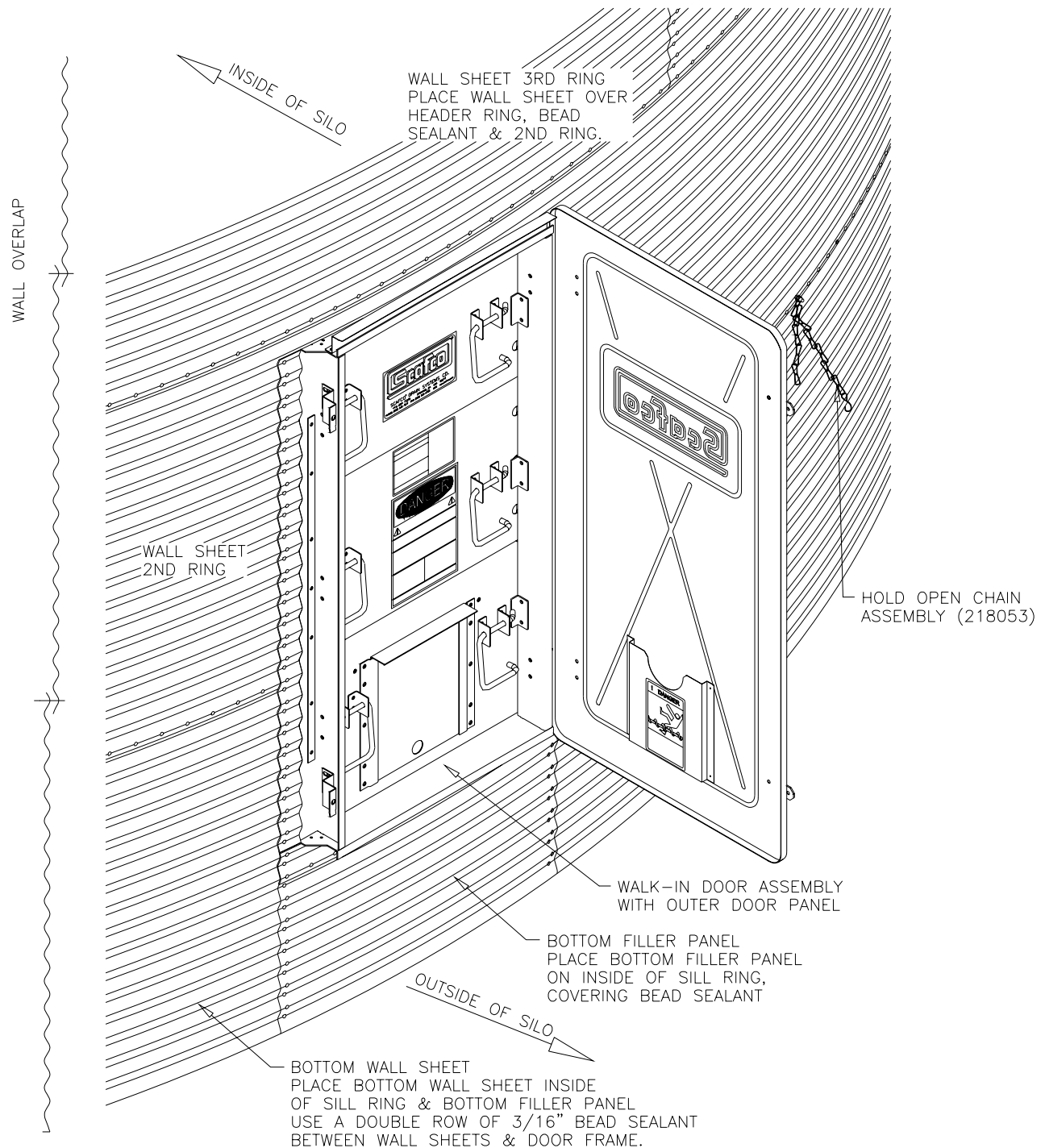
NOTE: CONCRETE AND BOTTOM WALL SHEET MUST BE CLEAN AND FREE OF WATER AND SOIL FOR PROPER SEAL.



BASE SEALING DETAIL



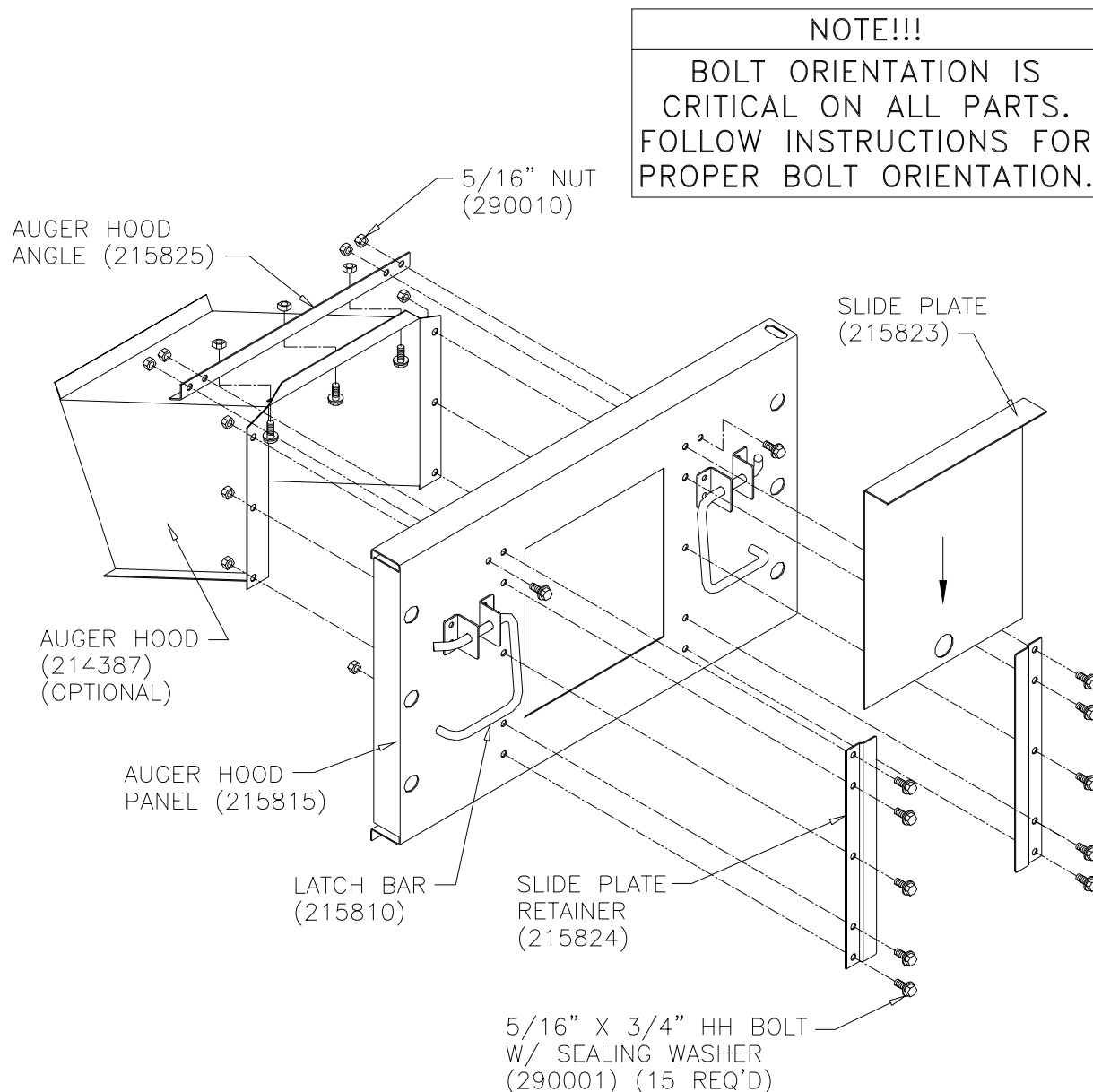
## WALK-IN DOOR INSTALLATION (STANDARD RAISED POSITION)



### **NOTE:**

Wall sheets are bolted onto the inside of the door jambs & sill ring. 3<sup>rd</sup> ring wall sheet is bolted onto the outside of the header ring. \*\*See page 4 of Walk-In Door Installation Instructions (290829) for connection details.

## **FIELD INSTALLATION OF AUGER HOOD** (OPTIONAL PURCHASE)



### **AUGER HOOD INSTALLATION:**

(When optional auger hood is used)

1. Remove slide plate retainers (215824) & auger hood angle (215825). The same bolts will be used to install the auger hood in the following steps.
2. Attach slide plate retainers (215824) & auger hood (214387) to auger hood panel with (6) 5/16" x 3/4" hh bolts & nuts, using the three vertical holes on each side of the auger hood.
3. Attach the auger hood angle (215825) to the auger hood panel & the auger hood (214387), using (7) 5/16" x 3/4" hh bolts & nuts.
4. Attach (2) 5/16" x 3/4" hh bolts & nuts to the slide plate retainers (215824) in the bottom holes of the retainers.
5. It is recommended that the slide plate (215823) be used in conjunction with the auger hood, particularly when aeration equipment is used on the bin.



## WALL SHEET GAUGES

**L=LONG WALL SHEET**

**S=SHORT WALL SHEET**

### **12' DIAMETER BIN**

MODEL NUMBER	8 GA.	10 GA.	11 GA.	12 GA.	13 GA.	14 GA.	15 GA.	16 GA.	17 GA.	18 GA.	19 GA.	20 GA.
1202												6L 2S
1203												10L 2S
1204										3L 1S	3L 1S	8L
1205								3L 1S	3L 1S		4L	8L
1206							3L 1S	3L 1S	4L	4L		8L
1207						3L 1S	3L 1S	4L	4L	4L		8L
1208					3L 1S	3L 1S	4L	4L	4L	4L		8L
1209				6L 2S	4L	4L	4L		4L	4L		8L

All horizontal and vertical seam bolts - 5/16" x 3/4", Grade 8.2

Use 3/8" x 1" for 12 Ga. sheets on 1209 bin.

Use 5/16" x 3/4" on the horizontal seam where 12 Ga. & lighter sheets meet.

### **15' DIAMETER BIN**

MODEL NUMBER	8 GA.	10 GA.	11 GA.	12 GA.	13 GA.	14 GA.	15 GA.	16 GA.	17 GA.	18 GA.	19 GA.	20 GA.
1502												8L 2S
1503												13L 2S
1504									4L 1S	4L 1S		10L
1505								4L 1S	4L 1S			15L
1506							4L 1S	4L 1S	5L		5L	10L
1507						4L 1S	4L 1S	5L	5L	5L		10L
1508					8L 2S	5L	5L		5L	5L		10L
1509				8L 2S	5L	5L	5L		5L		5L	10L

All horizontal and vertical seam bolts - 5/16" x 3/4", Grade 8.2

Use 3/8" x 1" for 12 Ga. sheets on 1509 bin.

Use 5/16" x 3/4" on the horizontal seam where 12 Ga. & lighter sheets meet.

**WALL SHEET GAUGES SUBJECT TO CHANGE WITHOUT PRIOR NOTICE.**



## WALL SHEET GAUGES

**L=LONG WALL SHEET**

**S=SHORT WALL SHEET**

### **18' DIAMETER BIN**

MODEL NUMBER	8 GA.	10 GA.	11 GA.	12 GA.	13 GA.	14 GA.	15 GA.	16 GA.	17 GA.	18 GA.	19 GA.	20 GA.
1803												16L 2S
1804									5L 1S	5L 1S		12L
1805								5L 1S	5L 1S	6L		12L
1806						5L 1S	5L 1S		6L	6L		12L
1807						10L 2S	6L		6L	6L		12L
1808				5L 1S	5L 1S	6L	6L		6L	6L		12L
1809				16L 2S	6L	6L		6L	6L		6L	6L

All horizontal and vertical seam bolts - 5/16" x 3/4", Grade 8.2

Use 3/8" x 1" for 12 Ga. sheets on 1808 & 1809 bins.

Use 5/16" x 3/4" on the horizontal seam where 12 Ga. & lighter sheets meet.

### **21' DIAMETER BIN**

MODEL NUMBER	8 GA.	10 GA.	11 GA.	12 GA.	13 GA.	14 GA.	15 GA.	16 GA.	17 GA.	18 GA.	19 GA.	20 GA.
2104								6L 1S	6L 1S		7L	7L
2105							6L 1S	6L 1S		7L	7L	7L
2106						6L 1S	6L 1S	7L		7L		14L
2107					6L 1S	6L 1S	7L	7L	7L		7L	7L
2108				6L 1S	6L 1S	7L	7L	7L	7L		7L	7L
2109				19L 2S	7L	7L		7L		7L	7L	7L

All horizontal and vertical seam bolts - 5/16" x 3/4", Grade 8.2

Use 3/8" x 1" for 12 Ga. sheets on 2108 & 2109 bin.

Use 5/16" x 3/4" on the horizontal seam where 12 Ga. & lighter sheets meet.

**WALL SHEET GAUGES SUBJECT TO CHANGE WITHOUT PRIOR NOTICE.**



## WALL SHEET GAUGES

**L=LONG WALL SHEET**

**S=SHORT WALL SHEET**

### **24' DIAMETER BIN**

MODEL NUMBER	8 GA.	10 GA.	11 GA.	12 GA.	13 GA.	14 GA.	15 GA.	16 GA.	17 GA.	18 GA.	19 GA.	20 GA.
2404							7L 1S		7L 1S			16L
2405							7L 1S	7L 1S	8L			16L
2406					7L 1S	7L 1S	8L		8L			16L
2407					7L 1S	7L 1S	8L	8L	8L			16L
2408				14L 2S		16L		8L	8L			16L
2409			7L 1S	15L 1S		16L	8L		8L		8L	8L

All horizontal and vertical seam bolts - 5/16" x 3/4", Grade 8.2

Use 3/8" x 1" for 11 & 12 Ga. sheets on 2408 & 2409 bins.

Use 5/16" x 3/4" on the horizontal seam where 12 Ga. & lighter sheets meet.

### **27' DIAMETER BIN**

MODEL NUMBER	8 GA.	10 GA.	11 GA.	12 GA.	13 GA.	14 GA.	15 GA.	16 GA.	17 GA.	18 GA.	19 GA.	20 GA.
2705							8L 1S	8L 1S	9L		9L	9L
2706					8L 1S	8L 1S		9L	9L	9L		9L
2707					8L 1S	17L 1S		9L	9L		9L	9L
2708				16L 2S	9L	9L		9L	9L	9L		9L
2709			8L 1S	17L 1S	9L	9L	9L		9L	9L	9L	

All horizontal and vertical seam bolts - 5/16" x 3/4", Grade 8.2

Use 3/8" x 1" for 11 & 12 Ga. sheets on 2708 & 2709 bin.

Use 5/16" x 3/4" on the horizontal seam where 12 Ga. & lighter sheets meet.

**WALL SHEET GAUGES SUBJECT TO CHANGE WITHOUT NOTICE.**



## WALL SHEET GAUGES

**L=LONG WALL SHEET**

**S=SHORT WALL SHEET**

### **30' DIAMETER BIN**

MODEL NUMBER	8 GA.	10 GA.	11 GA.	12 GA.	13 GA.	14 GA.	15 GA.	16 GA.	17 GA.	18 GA.	19 GA.	20 GA.
3005						9L 1S	9L 1S		10L	10L		10L
3006					9L 1S	9L 1S	10L		10L	10L		10L
3007					18L 2S	10L	10L	10L	10L		10L	
3008			9L 1S	9L 1S	10L	10L	10L	10L	10L		10L	
3009		9L 1S	9L 1S	10L	10L	10L	10L		10L	10L	10L	

All horizontal and vertical seam bolts - 5/16" x 3/4", Grade 8.2

Use 3/8" x 1" for 10, 11 & 12 Ga. sheets on 3008 & 3009 bins.

Use 5/16" x 3/4" on the horizontal seam where 12 Ga. & lighter sheets meet.

### **33' DIAMETER BIN**

MODEL NUMBER	8 GA.	10 GA.	11 GA.	12 GA.	13 GA.	14 GA.	15 GA.	16 GA.	17 GA.	18 GA.	19 GA.	20 GA.
3305							10L 1S	10L 1S	11L	11L		11L
3306					10L 1S	10L 1S	11L		11L	11L	11L	
3307				10L 1S	10L 1S	11L	11L	11L		11L	11L	
3308			10L 1S	10L 1S	11L	11L	11L	11L		11L	11L	
3309		10L 1S	10L 1S	11L	11L	11L	11L	11L		11L	11L	

All horizontal and vertical seam bolts - 5/16" x 3/4", Grade 8.2

Use 3/8" x 1" for 10, 11 & 12 Ga. sheets on 3307, 3308 & 3309 bin.

Use 5/16" x 3/4" on the horizontal seam where 12 Ga. & lighter sheets meet.

### **36' DIAMETER BIN**

MODEL NUMBER	8 GA.	10 GA.	11 GA.	12 GA.	13 GA.	14 GA.	15 GA.	16 GA.	17 GA.	18 GA.	19 GA.	20 GA.
3605						11L 1S	11L 1S		12L	12L		12L
3606					11L 1S	11L 1S	12L		24L	12L		
3607				11L 1S	11L 1S	12L	12L	12L	12L	12L		
3608			11L 1S	11L 1S	12L	12L	12L	12L	12L	12L		
3609		11L 1S	11L 1S	12L	12L	12L	12L	12L	12L	12L		

All horizontal and vertical seam bolts - 5/16" x 3/4", Grade 8.2

Use 3/8" x 1" for 10, 11 & 12 Ga. sheets on 3607, 3608 & 3609 bin.

Use 5/16" x 3/4" on the horizontal seam where 12 Ga. & lighter sheets meet.

**WALL SHEET GAUGES SUBJECT TO CHANGE WITHOUT NOTICE.**



## WALL SHEET GAUGES

**L=LONG WALL SHEET**

**S=SHORT WALL SHEET**

### **39' DIAMETER BIN**

MODEL NUMBER	8 GA.	10 GA.	11 GA.	12 GA.	13 GA.	14 GA.	15 GA.	16 GA.	17 GA.	18 GA.	19 GA.	20 GA.
3905						12L 1S	12L 1S	13L	13L	13L		
3906					12L 1S	12L 1S	13L	13L	13L	13L		
3907				24L 2S	13L	13L	13L		13L	13L		
3908		12L 1S		25L 1S	13L	13L	13L		13L	13L		
3909	12L 1S	12L 1S	13L	13L	13L	13L		13L	13L	13L		

All horizontal and vertical seam bolts - 5/16" x 3/4", Grade 8.2

Use 3/8" x 1" for 8, 10, 11 & 12 Ga. sheets on 3907, 3908 & 3909 bins.

Use 5/16" x 3/4" on the horizontal seam where 12 Ga. & lighter sheets meet.

### **42' DIAMETER BIN**

MODEL NUMBER	8 GA.	10 GA.	11 GA.	12 GA.	13 GA.	14 GA.	15 GA.	16 GA.	17 GA.	18 GA.	19 GA.	20 GA.
4205					13L 1S	13L 1S		14L	14L	14L		
4206				13L 1S	13L 1S	14L		14L	14L	14L		
4207				26L 2S	14L	14L		14L	14L	14L		
4208		13L 1S		27L 1S	14L	14L		14L	14L	14L		
4209	13L 1S	13L 1S	14L	14L	14L	14L		14L	28L			

All horizontal and vertical seam bolts - 5/16" x 3/4", Grade 8.2

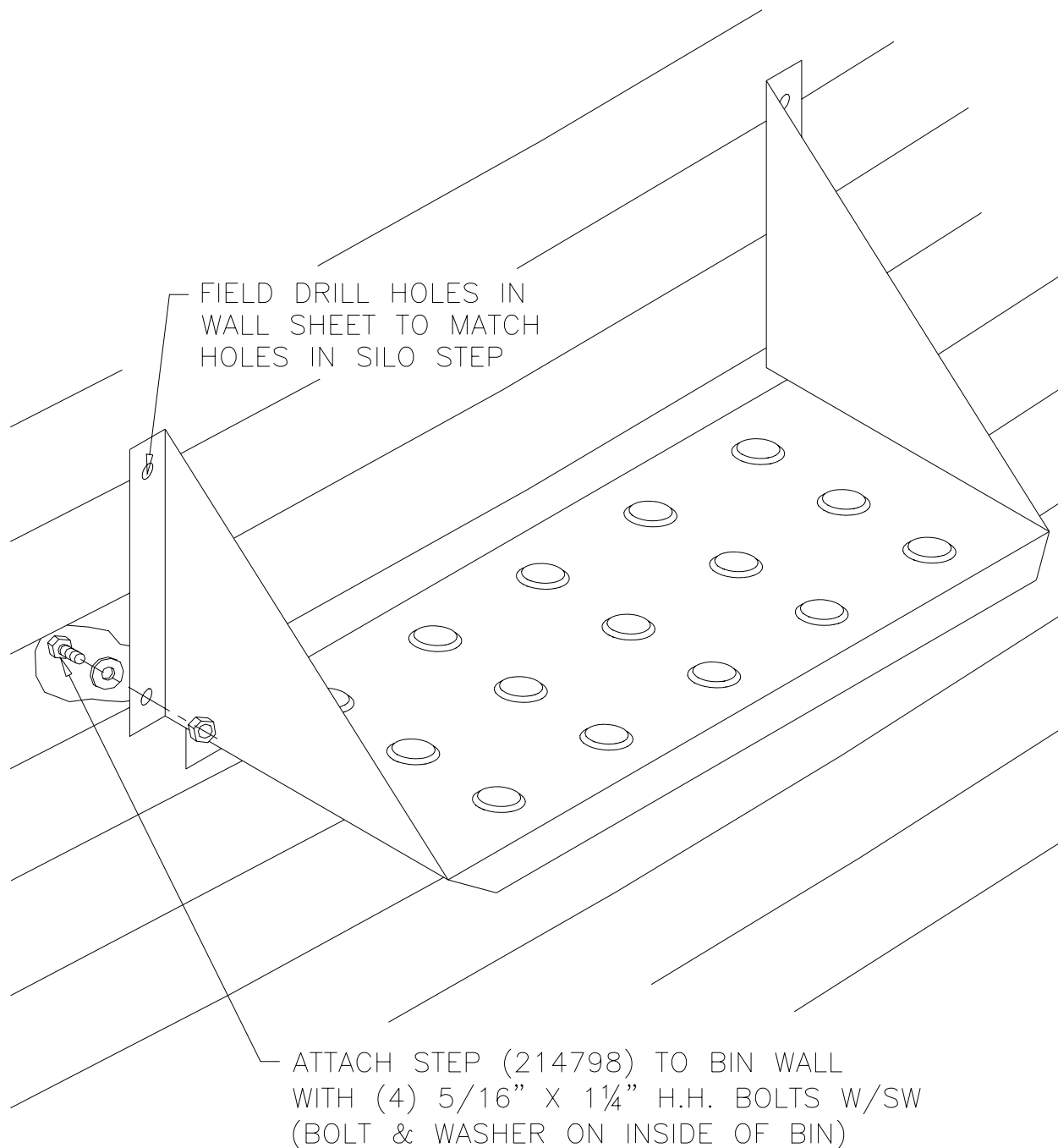
Use 3/8" x 1" for 8, 10, 11 & 12 Ga. sheets on 4206, 4207, 4208 & bin.

Use 3/8" x 1" on 4209 bin.

Use 5/16" x 3/4" on the horizontal seam where 12 Ga. & lighter sheets meet.

**WALL SHEET GAUGES SUBJECT TO CHANGE WITHOUT NOTICE.**

**SILO STEP INSTALLATION**  
(OPTIONAL PURCHASE)









**SCAFCO Grain Systems Company**

6200 E. Main Avenue

PO Box 11215

Spokane, WA 99211-1215, USA